



kate

reality



### 678 Dam Road Nubeena TAS

2 1 12

12.4 hectares (approx. 25 acres) of your own conservation park. Cosy vertical board 2-bedroom home, with lovely outdoor decking where you can enjoy being surrounded by nature and the serenity.

Step inside to open kitchen, dining and living relax by the fire on a cooler day or night. This cozy abode boasts 2 bedroom 1 located on the lower floor and 1 above on the mezzanine floor. The bathroom has been tastefully upgraded along with new flooring laid throughout.

Outside enjoy the ambience of this surround covered deck and the warm yourself by the fire pot.

Ample wood supply already stacked and plenty to harvest, good water tank supply fresh drinking water for the property. There are 2 sheds on the property for storage of garden equipment and tools.

A modern solar system has replaced the original set up and

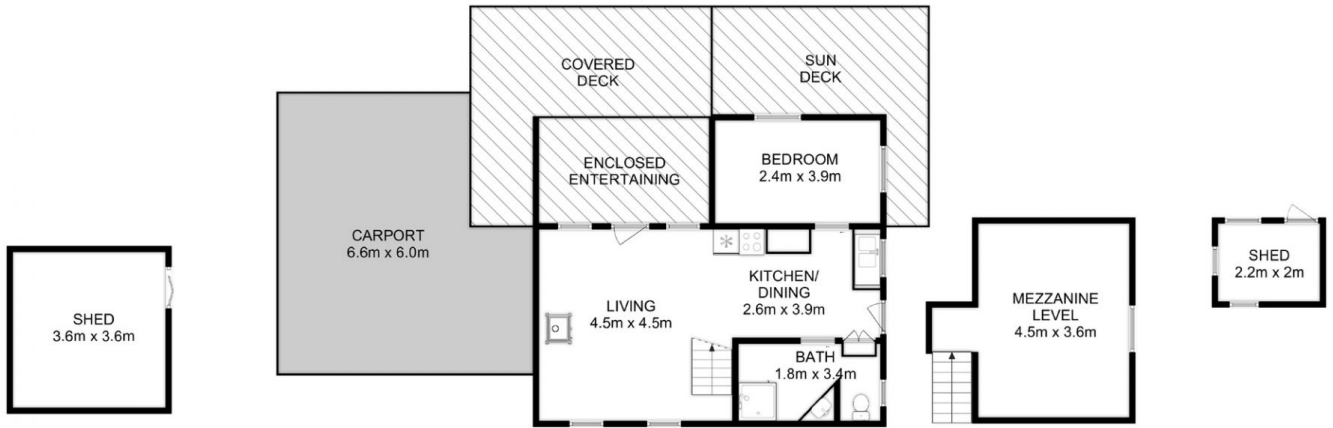
**Price** : \$ 355,000  
**Building Size** : 51 sqm  
**Land Size** : 12.4 ha  
**View** : <https://www.katestoreyrealty.com.au/sale/tas/hobart-southern/nubeena/residential/house/7849253>



**Kate Storey**  
03 6253 6095



**Chloe Wright**  
(03) 6265 3000



Total Approx. Floor Area : 62 sqm  
 Total Approx. Outbuilding Area : 18 sqm



All measurements are internal and approximate.  
 This plan is a sketch for illustration, not valuation.  
 Produced by Open2view.com