



kate

reality



10 Tramway Street Port Arthur TAS

3 2 5

A delightful single-level brick home nestled in the picturesque town of Port Arthur with views of the majestic mountains and glistening water glimpses. Nestled on the generous 20.71ha rural parcel, this private home with sheds, covered storage area and large workshop presents a lifestyle opportunity for farming enthusiasts and nature lovers alike.

The beautifully maintained three-bedroom with two-bathroom home is large enough for a family or couple wanting family and friends to regularly visit with the added benefit of a generous size sleep out. The inviting open-plan layout is seamless connecting the kitchen, dining area, and lounge.

A wood heater takes centre stage, providing warmth and cosiness during the chilly nights. The generous sun deck

Building Size : 130 sqm
Land Size : 20.71 ha
View : <https://www.katestoreyrealty.com.au/sale/tas/hobart-southern/port-arthur/residential/house/7666676>



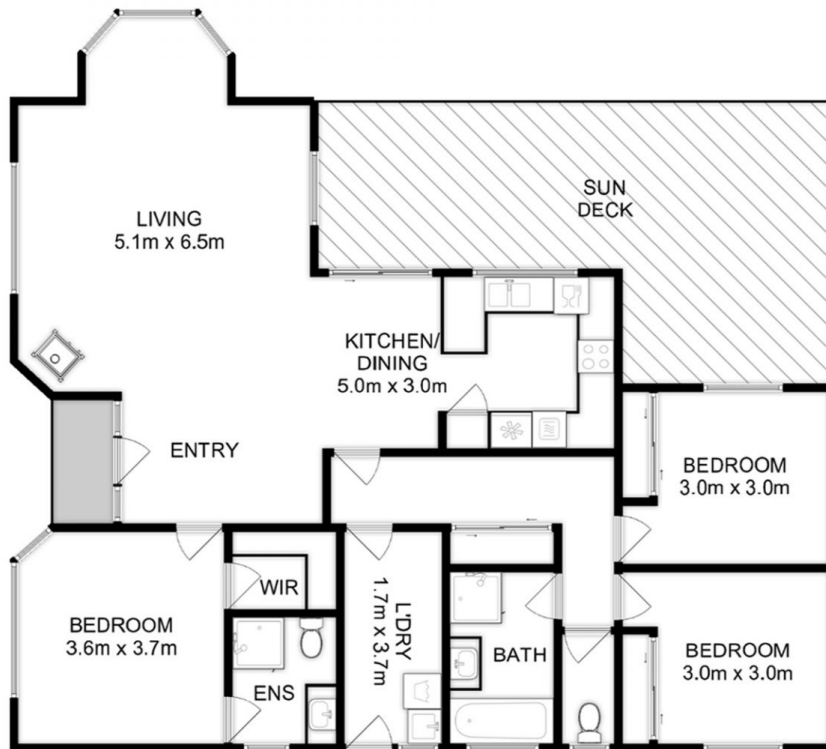
Niahn Palmer
03 6253 6095



Total Approx. Floor Area : 130 sqm
 Total Approx. Outbuilding Area : 150 sqm
 Total Approx. Storage Area : 202 sqm



All measurements are internal and approximate.
 This plan is a sketch for illustration, not valuation.
 Produced by Open2view.com



Total Approx. Floor Area : 130 sqm



All measurements are internal and approximate.
This plan is a sketch for illustration, not valuation.
Produced by Open2view.com