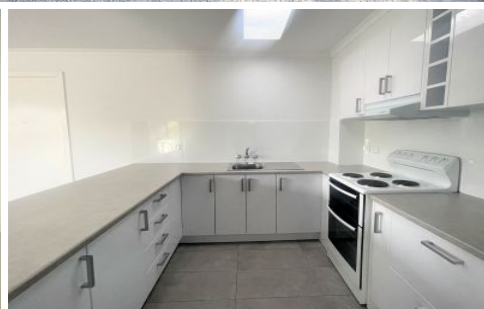




kate

reality



3/20 Lincoln Street Lindisfarne TAS

2  1 

Located on level 1 and only a short 50 metre walk to the heart of Lindisfarne Village you will find this well designed, fully renovated two bedroom unit.

View : <https://www.katestoreyrealty.com.au/lease/tas/hobart-southern/lindisfarne/residential/unit/7645519>

The modern kitchen provides plenty of cupboard and bench space and is open to the living and dining areas which are light, bright and extremely spacious. The home consists of heat pump heating to ensure all year round comfort.

The bedrooms are all queen in size and are complete with built-in-robies and plush carpet.

The bathroom is well thought out and provides a shower over bath, vanity plus a smarty laundry space. There is also a separate toilet.

The unit is situated facing Mount Wellington, with the



Alison Parker
03 6265 3000