






20 Pennington Drive Sorell TAS

3  2  4 

Capturing a sense of comfortable modern family living this stunning home will make a lasting impression through its combination of light filled interiors and stylish design. Offering the lucky purchasers, a wonderful opportunity to simply move in and enjoy a life of convenience.

The three generous sized bedrooms have the convenience of built-in wardrobes while the master bedroom has the added luxury of a walk-in robe and ensuite. The family bathroom is spacious and sleek in design with separate shower and bath.

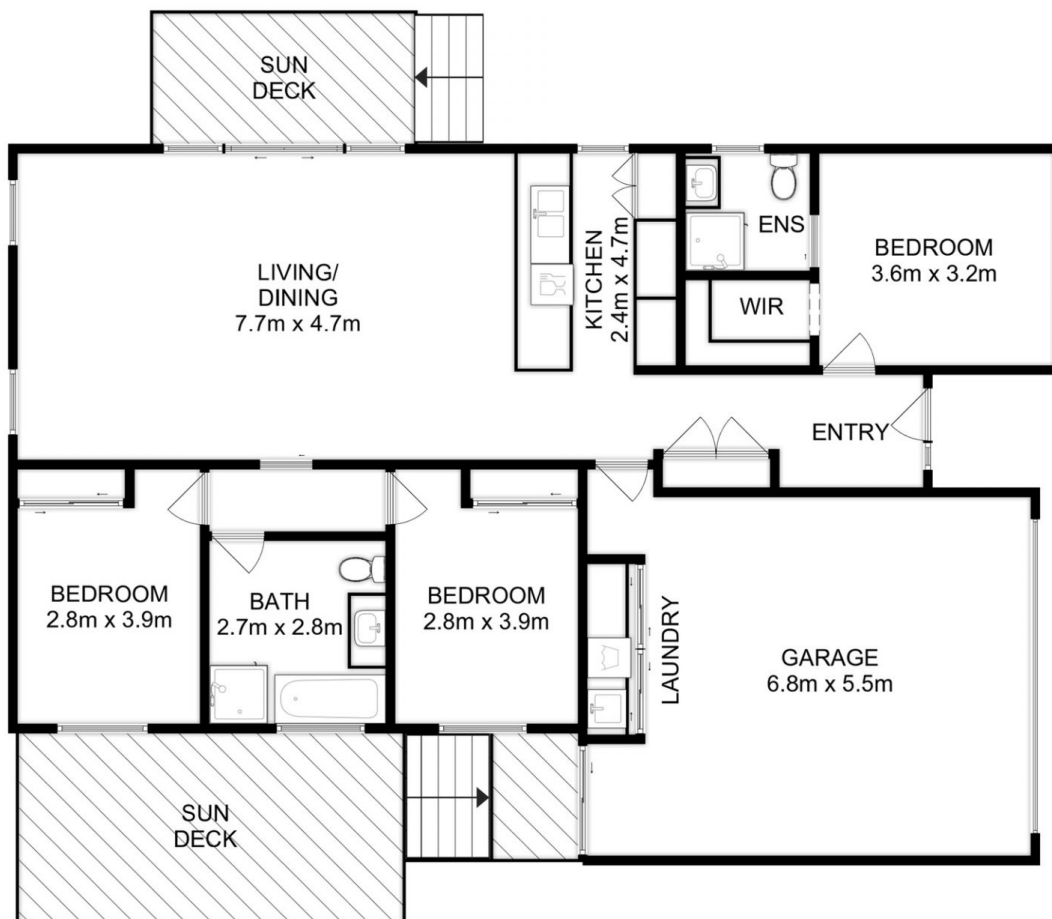
Both bathrooms have been recently updated with new flooring and tiling, keeping with the modern interiors on offer from this beautiful home.

The large garage with internal access has plenty of room for storage with the addition of a hideaway laundry that

Building Size : 118 sqm
Land Size : 620 sqm
View : <https://www.katestoreyrealty.com.au/sale/tas/hobart-southern/sorell/residential/house/7569072>



Emily Collins
 03 6265 3000



Total Approx. Floor Area (inc. garage): 156 sqm

All measurements are internal and approximate.
This plan is a sketch for illustration, not valuation.
Produced by Open2view.com