



kate

reality



10 Kormos Drive Nubeena TAS

3  1 

This spacious three-bedroom family home set among established gardens is the perfect base for a relaxed and comfortable lifestyle. The large living room has bay windows so you can take-in the breathtaking panorama view over the bay and the mountains. On a clear day you can see as far as Bruny Island. This is a home you will never want to leave.

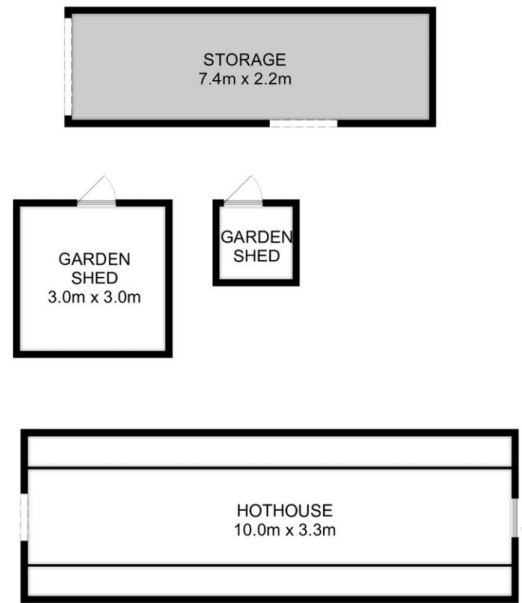
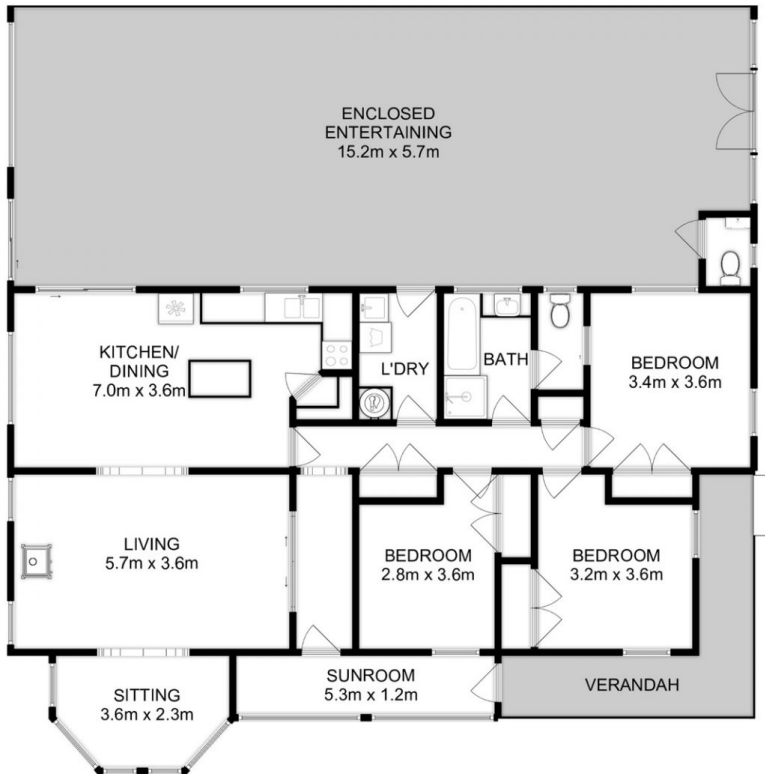
The modern kitchen which was recently renovated features an induction oven and cook top, island bench and built-in pantry perfect for large family cooking and entertaining. There is also new flooring and carpet that makes the home feel clean and fresh.

- Spacious open-concept living designed to accommodate a family
- Large windows that overlook the water and mountains

Price : \$ 585,000
Building Size : 126 sqm
Land Size : 2527 sqm
View : <https://www.katestoreyrealty.com.au/sale/tas/hobart-southern/nubeena/residential/house/7407706>



Niahn Palmer
03 6253 6095



Total Approx. Floor Area : 131 sqm
 Total Approx. Outbuilding Area : 60 sqm

All measurements are internal and approximate.
 This plan is a sketch for illustration, not valuation.
 Produced by Open2view.com