



kate

reality



7 Gregory Street Lewisham TAS

3 2 5

If water views are an essential requirement for your next residence be prepared to fall in love with the uninterrupted views from this much loved home. The sweeping water views extend from Clarks Bay and over Pitt Water, with the commanding presence of Mount Wellington finishing the dream outlook.

Watch the boats in the bay and the stunning sunsets. Living here will feel like a permanent holiday with the coastal position offering so much opportunity for leisure activities.

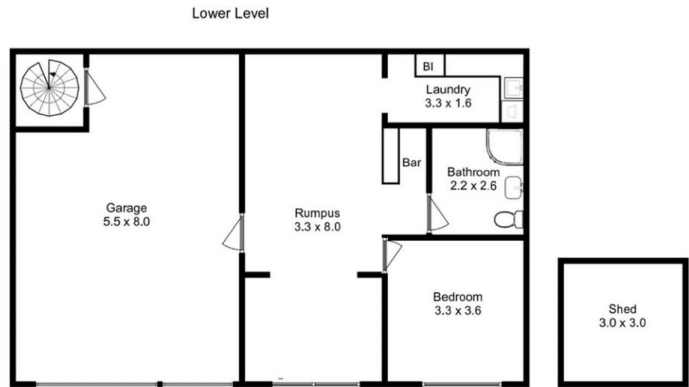
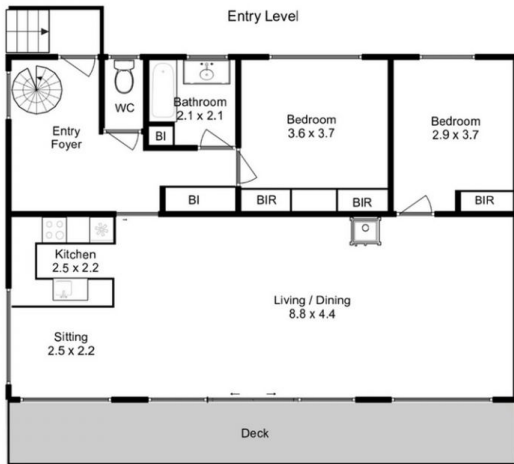
The home is flooded with natural light that fills open plan living and kitchen space. Windows are perfectly positioned to admire the stunning water vista.

When entertaining you can cook enjoying the view or share a beverage together on the sundeck that runs the length of

Building Size : 180 sqm
Land Size : 878 sqm
View : <https://www.katestoreyrealty.com.au/sale/tas/hobart-southern/lewisham/residential/house/7321716>



Emily Collins
03 6265 3000



Approx. Floor Area : 212 sqm (including Garage)
 Approx. Outbuilding Area : 9 sqm



All measurements are internal and approximate.
 This plan is a sketch for illustration, not valuation.
 Produced by Open2view.com