



## 60 Marys Road Nubeena TAS

4  1  5 

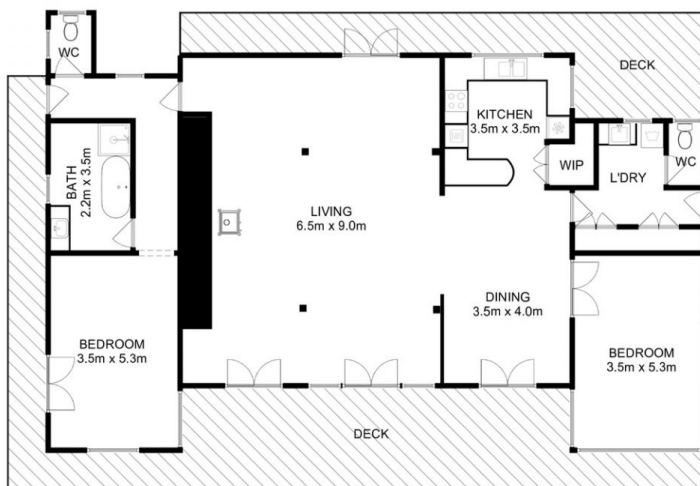
Enjoy the serenity this property offers with two existing homes nestled on more than 2 acres.

The main home was designed and built in 1992 inspired by traditional farmhouses, with handcrafted joints made on site from locally milled Celery Top Pine logs. A beautiful bluestone wall forms the thermal core and gas fireplace ensuring efficient transmission of the heat. The window frames and doors are recycled Tasmanian hardwood, and the ceilings feature various species including Myrtle, Sassafras, Musk, Tas Oak and Celery Top Pine. The flooring is Tas Oak. The house faces due solar north set on site by sundial on mid summers day. The glazing to the north allows full sun to heat the terracotta tiled entry as a passive solar heating system, with the eaves set to ensure midday shade in mid-summer. The house was designed with the opportunity for a further bedroom wing to the east

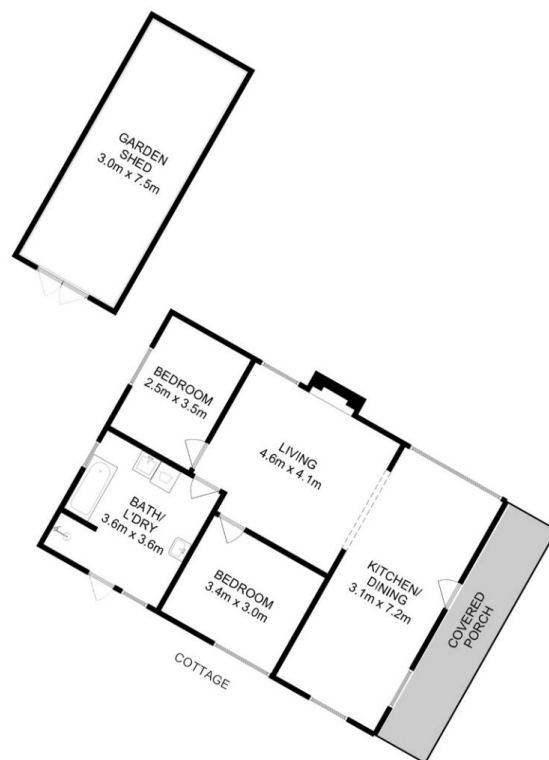
**Price** : \$ 640,000  
**Building Size** : 177 sqm  
**Land Size** : 9207 sqm  
**View** : <https://www.katestoreyrealty.com.au/sale/tas/hobart-southern/nubeena/residential/house/7232179>



**Kate Storey**  
03 6253 6095



MAIN HOUSE



Total Approx. Main House Area : 177 sqm  
 Total Approx. Cottage Area : 82 sqm  
 Total Approx. Outbuilding Area : 23 sqm

All measurements are internal and approximate.  
 This plan is a sketch for illustration, not valuation.  
 Produced by Open2view.com