



kate

reality



3 Edith Close Forcett TAS

Whether you are looking to escape the suburban struggles, downsizing from a much larger property or just need a little more space, you will be delighted by this block zoned rural living of just over 10,000 square metres or almost two and half acres.

Nestled in a quiet cul-de-sac this block comes with a great sized powered shed, that presents many opportunities. The shed is on a concrete slab and the internal walls lined.

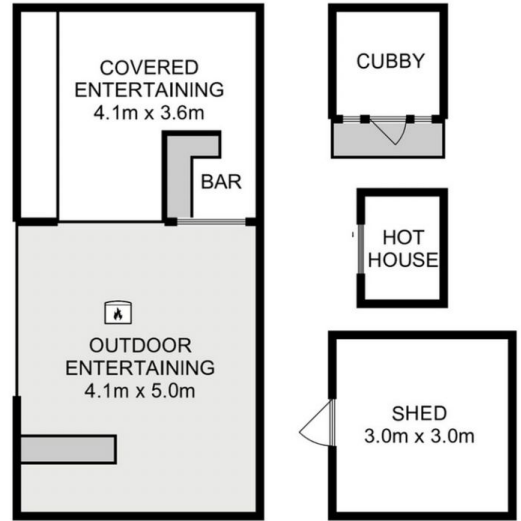
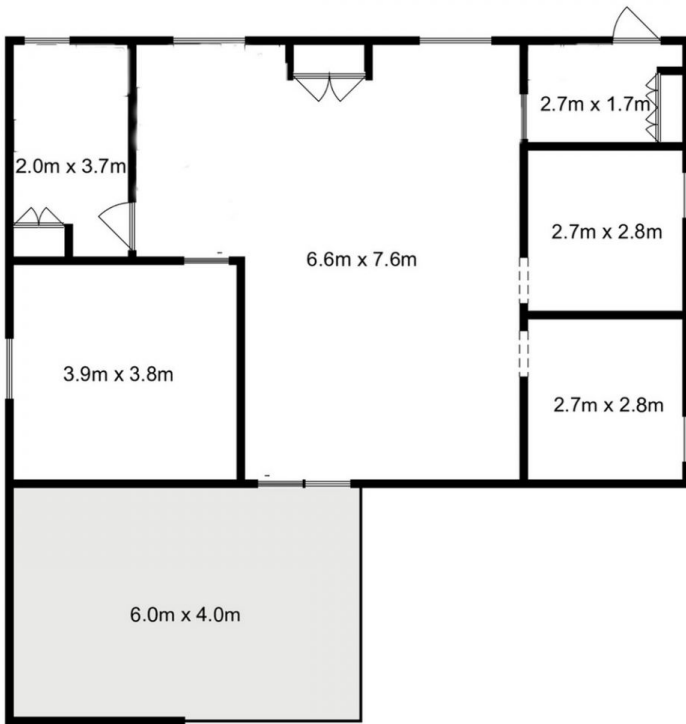
With sweeping rural views and completed new homes in the vicinity, an opportunity to build something special (stca) is within reach.

There are established vegie beds and a small dam which will keep your fruit and veggies flourishing all year around. There is a small humpy/outbuilding, where the current

Price : \$ 530,000
Land Size : 1 ha
View : <https://www.katestoreyrealty.com.au/sale/tas/hobart-southern/forcett/residential/land/7130470>



Donna Wooley
03 6265 3000



Total Approx. Floor Area : 90 sqm
 Total Approx. Outbuilding Area : 29 sqm

All measurements are internal and approximate.
 This plan is a sketch for illustration, not valuation.
 Produced by Open2view.com

