



17 Eagle View Road Nubeena TAS

2  1  2 

Nestled in the hinterland of the quaint fishing village of Nubeena, with views over Parsons Bay, this impressive castle-style property is the perfect character abode. Built by a Master Builder and Stonemason, the home contains many bespoke touches and some of finest examples of Tasmanian stonework, both at the impressive entrance of the house and throughout the garden. Live here permanently or use as fun second home getaway with Airbnb potential.

Set into the hill, this multi-level two-bedroom home features polished Tasmanian oak floorboards upstairs and from the large windows you can enjoy sweeping views across the bay towards Bruny Island. The open plan kitchen/dining/living area opens to the 180-degree vista from the front deck that takes in the surrounding bushland and stunning water views. A side covered area provides the ideal area

Building Size : 120 sqm
Land Size : 1048 sqm
View : <https://www.katestoreyrealty.com.au/sale/tas/hobart-southern/nubeena/residential/house/6932918>

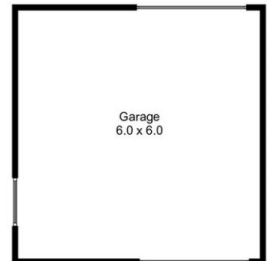
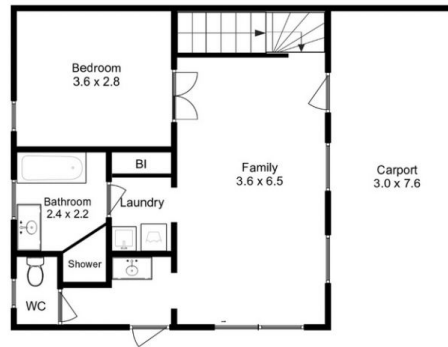


Niahn Palmer
 03 6253 6095

Upper Level



Lower Level



Approx. Floor Area : 120 sqm
Approx. Outbuilding Area : 36 sqm

All measurements are internal and approximate.
This plan is a sketch for illustration, not valuation.
Produced by Open2view.com