



kate

reality



4 Norfolk Crescent Primrose Sands TAS

1 1 1

If you are looking for the perfect holiday home to escape from the busy city life or looking to enter the market this home could well be what you have been looking for!

The floor plan has been well thought through, ensuring every inch of space is utilised.

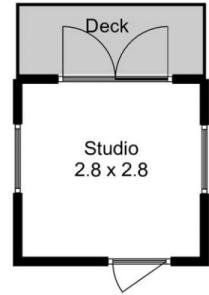
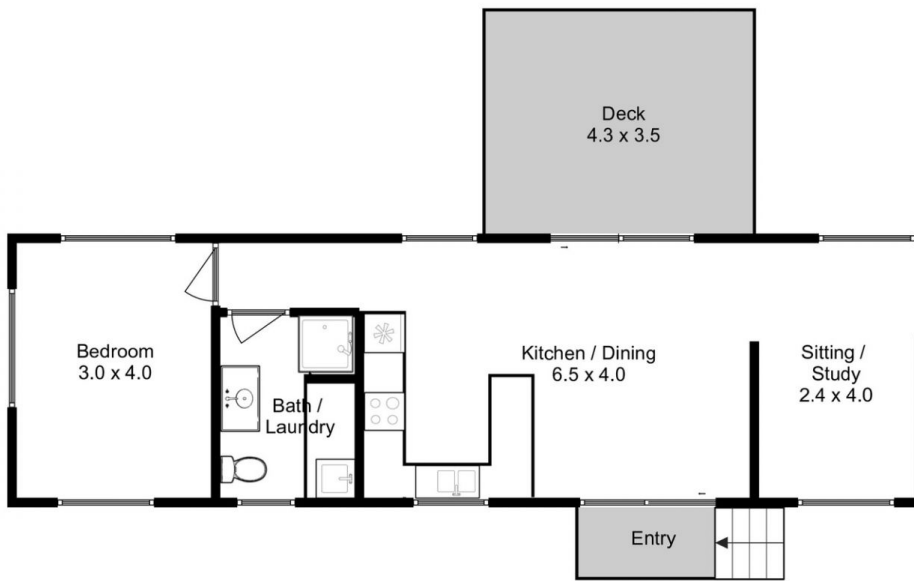
The home lends itself perfectly for a weekender or someone who wants to work from home. Although, I can't guarantee how much work will get done with the distraction of the stunning views filling the windows of the study (which could easily be converted to a 2nd bedroom STCA).

The views continue along the front of the house and the open plan kitchen and living are light and bright, with elevated ceilings and flow out onto a good-sized deck letting you breathe in the sea air and enjoy the incredible

Price : \$ 497,500
Building Size : 58 sqm
Land Size : 562 sqm
View : <https://www.katestoreyrealty.com.au/sale/tas/hobart-southern/primrose-sands/residential/house/6927998>



Donna Wooley
03 6265 3000



Approx. Floor Area : 58 sqm
Approx. Studio Area : 8 sqm

All measurements are internal and approximate.
This plan is a sketch for illustration, not valuation.
Produced by Open2view.com