



kate

reality



19 Linden Road Primrose Sands TAS

3 1 2

You might just fall in love when you inspect this home, I know I have!

Entering this home you will appreciate the sense of space and love the feeling of warmth and tranquillity through the use of natural timbers and muted colour tones that greet you once inside.

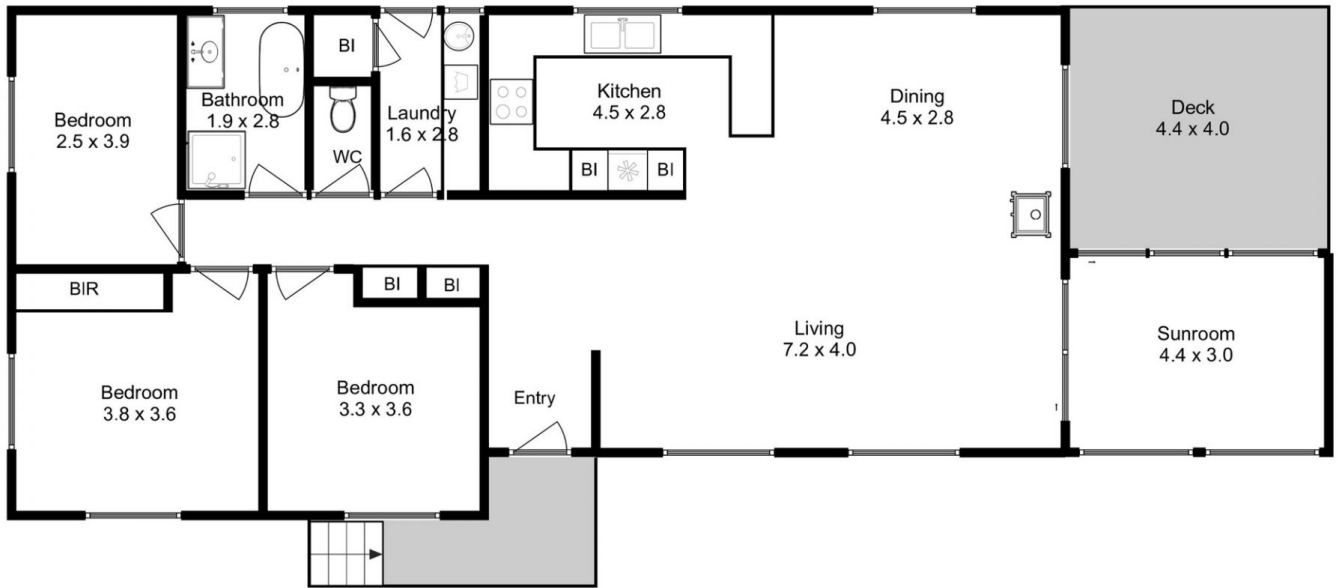
The large open plan lounge and dining are inviting but it's the windows full of sea and sky that will keep you mesmerized for years to come.

The current owners have updated this property and with clever use of texture, light and beautiful design, and have created a stunning home just waiting for the next family to call home.

Price : \$ 828,500
Building Size : 135 sqm
Land Size : 655 sqm
View : <https://www.katestoreyrealty.com.au/sale/tas/hobart-southern/primrose-sands/residential/house/6901180>



Donna Wooley
03 6265 3000



Approx. Floor Area : 135 sqm



All measurements are internal and approximate.
This plan is a sketch for illustration, not valuation.
Produced by Open2view.com