



kate

reality



### 465 White Beach Road White Beach TAS

3 1 2

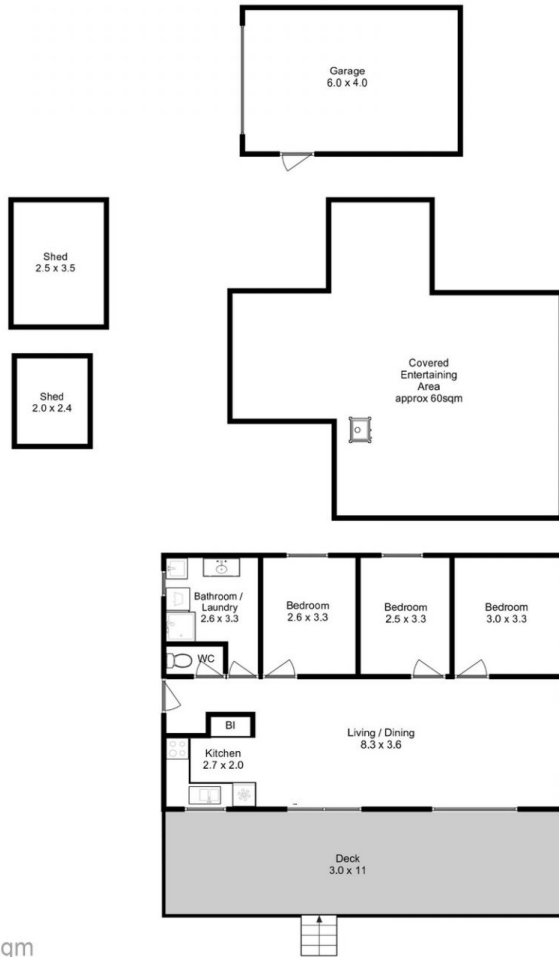
This well maintained three-bedroom home is nestled on a 1024m<sup>2</sup> block with an outlook over the bay to the mountains. Relax on the front deck, with sufficient space to entertain friends for a BBQ while they take in the ever-changing view. If you want privacy or the weather turns cold, there is a large private undercover area at the rear of home with convenient wood heater. This is a great space for the kids to play or do craft or maybe you are a gardener and want to get your seedlings started undercover.

There are 2 boat ramps close by making this the ideal property for boating and fishing enthusiasts. A lockable freestanding modern garage/shed at the back of home is ideal for secure parking, storage or workshop. Additional yard parking has everyone's vehicles off the street.

**Price** : \$ 535,000  
**Building Size** : 81 sqm  
**Land Size** : 1024 sqm  
**View** : <https://www.katestoreyrealty.com.au/sale/tas/hobart-southern/white-beach/residential/house/6856743>



**Niahn Palmer**  
03 6253 6095



Approx. Floor Area : 81 sqm  
 Approx. Outbuilding Area : 95 sqm



All measurements are internal and approximate.  
 This plan is a sketch for illustration, not valuation.  
 Produced by Open2view.com