



10 Susan's Bay Road Primrose Sands TAS

2  1  1 

There's plenty to like about this delightful, much loved beach home located in the seaside township of Primrose Sands with easy access to Gypsy Bay and the local boat ramp.

Perfectly positioned with a sunny aspect, this home has been tastefully renovated with a well-appointed modern kitchen which integrates functionality & style while keeping in with the coastal lifestyle.

The open plan design allows for the amazing views to fill the space with sea and sky.

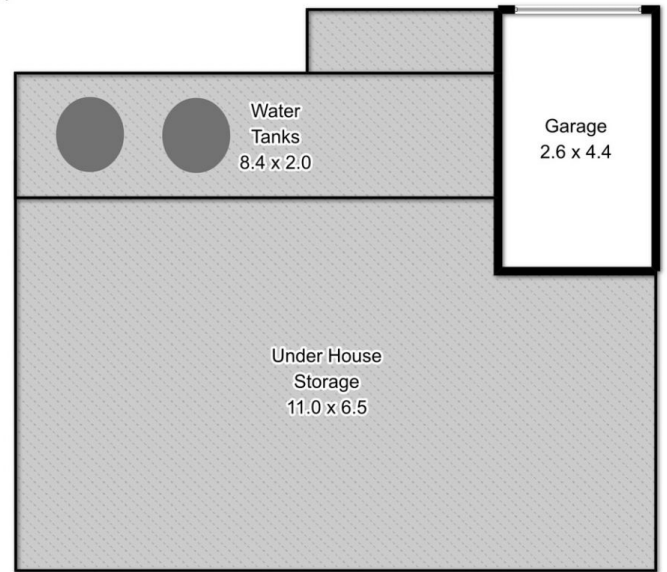
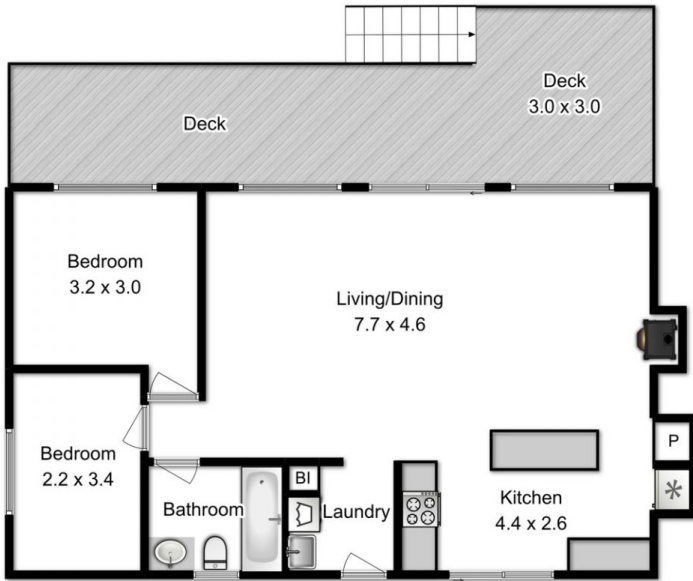
There is a pellet fire for cold wintry nights and the convenience of a reverse cycle heat pump for both cooling and heating.

Price : \$ 530,000
Building Size : 81 sqm
Land Size : 556 sqm
View : <https://www.katestoreyrealty.com.au/sale/tas/hobart-southern/primrose-sands/residential/house/6773930>



Donna Wooley
03 6265 3000

All measurements are internal and approximate
This plan is a sketch for illustration not valuation
Produced by open2view.com for Kate Storey Realty



Floor area approx 80sqm