



kate

reality



3 Timber Mill Court Midway Point TAS

3 1 2

Located in popular Midway Point, this beautifully presented and maintained three bedroom home has spectacular water views over Orielton Lagoon and back towards Sorell.

Flowing effortlessly throughout you will find an open plan design that boasts good size bedrooms with built in robes in each room.

Currently tenanted until August 2022 (\$465pw), and less than 5 years old, this really is a set and forget opportunity.

Low maintenance and in excellent condition, this home includes reverse cycle heating and cooling ensuring year-round comfort.

There is a north facing deck off the lounge that soaks up

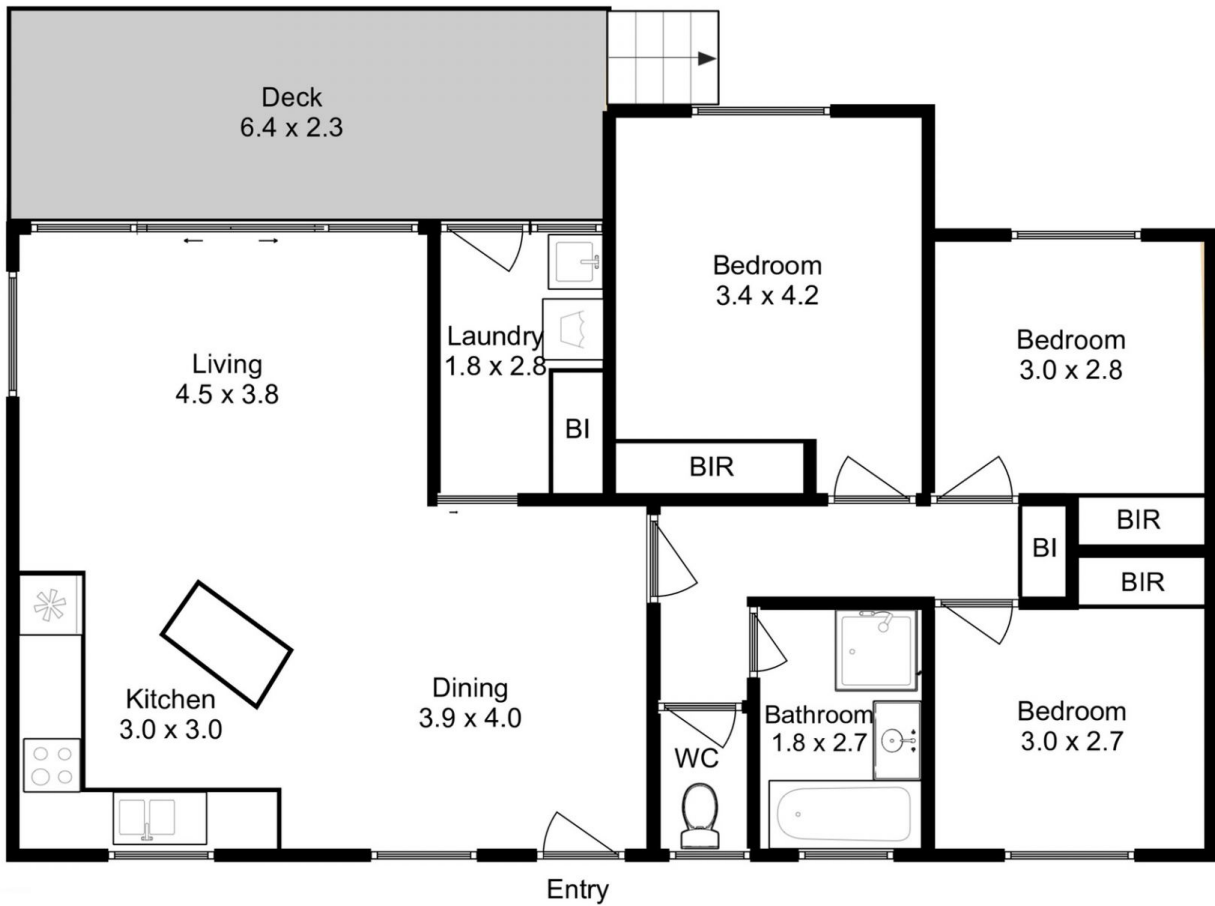
Building Size : 98 sqm
Land Size : 472 sqm
View : <https://www.katestoreyrealty.com.au/sale/tas/hobart-southern/midway-point/residential/house/6746259>



Donna Wooley
03 6265 3000



Emily Collins
03 6265 3000



Total Approx. Floor Area : 98sqm

All measurements are internal and approximate.
 This plan is a sketch for illustration, not valuation.
 Produced by Open2view.com