



kate

reality



1661 Main Road Nubeena TAS

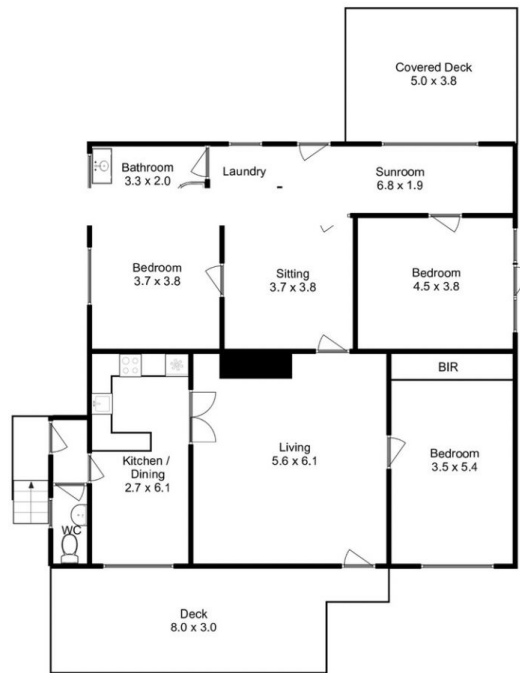
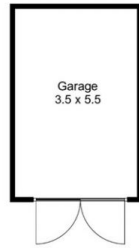
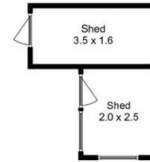
3 1

Character and charm have been preserved in this beautiful home with original floorboards, feature wall panelling and ornamental cornice giving historical context with modern conveniences added. The large windows allow the water view and changing light to be enjoyed from the main rooms. The kitchen is a delight featuring a deep country sink and open shelves to display your favourite things, open to the dining room and the water view. There are two lounge area, one formal and the other more relaxed to read books and grow house plants. The bathroom is spacious with the convenience of a second toilet in home. The large front deck is for watching the activity on the bay while the undercover rear Alfresco dining area gives privacy for entertaining with smart landscaping complimented by sturdy but stylish retaining walls. Sheds will keep all your tools and fishing gear secure and tidy. There is a large flat pad for parking of a boat and caravan.

Land Size : 1827 sqm
View : <https://www.katestoreyrealty.com.au/sale/tas/hobart-southern/nubeena/residential/house/6443083>



Niahn Palmer
03 6253 6095



Total Approx. Floor Area : 160 sqm
 Total Approx. Outbuilding Area : 30 sqm

All measurements are internal and approximate.
 This plan is a sketch for illustration, not valuation.
 Produced by Open2view.com