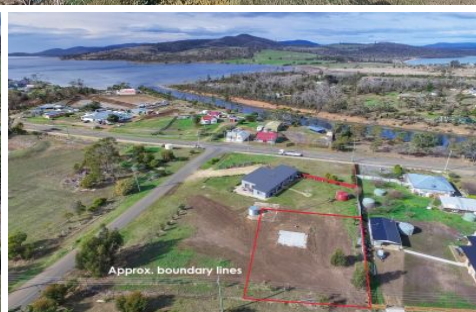




kate

reality



1/ Constance Street Dunalley TAS

Near level allotment with power and phone nearby. Ready to build your dream home (stca). A cement slab is ready for a shed or caravan for you to get started.

- Conveniently located within walking distance to shops and Golf Club
- Handy to boat ramp and jetty for those who enjoy fishing
- Great location for those with children attending Dunalley School
- Approximately 50 minutes from Hobart and 20 minutes from Sorell
- Surfing beaches only 10-15 minutes drive away

Adjoining allotment in Florence Street is also available to purchase for offers over \$98,000.

Land Size : 1000 sqm

View : <https://www.katestoreyrealty.com.au/sale/tas/hobart-southern/dunalley/residential/land/6388368>



Kate Storey
03 6253 6095