



kate

reality



## 12 Gregory Street Lewisham TAS

2 1 2

What if, you could wake up every morning in your own slice of paradise only 30 minutes from the Hobart CBD?

Set back from the road, this beautifully presented and recently upgraded two-bedroom home screams lifestyle from the very first glance.

This home showcases modern living at its finest while incorporating stunning style, quality inclusions and views of the river and mountain.

Blending quality finishes such as stylish, light and bright benchtops, with sun-lit interiors and stunning views, nestled on a prime lifestyle address, this much loved home has all the features which will ensure that you can move in and enjoy what is a wonderful home in a popular location.

**Price** : \$ 600,000  
**Building Size** : 76 sqm  
**Land Size** : 782 sqm  
**View** : <https://www.katestoreyrealty.com.au/sale/tas/hobart-southern/lewisham/residential/house/6289752>



**Emily Collins**  
03 6265 3000



**Donna Wooley**  
03 6265 3000



Spa

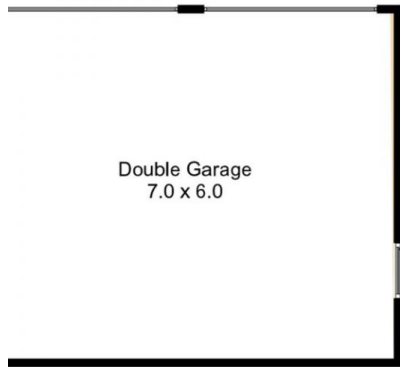
Deck

All measurements are internal and approximate  
This plan is a sketch for illustration not valuation  
Produced by open2view.com for Kate Storey Rea

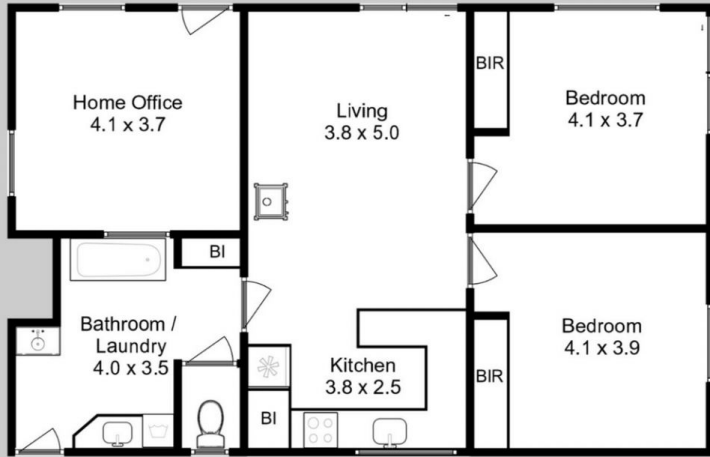
Deck

Deck

Deck



Double Garage  
7.0 x 6.0



Covered  
Porch

House Floor area approx 95sqm