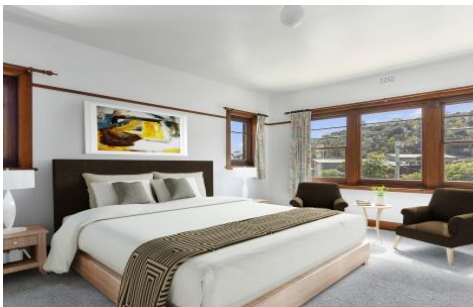




kate

reality



302A Park Street New Town TAS

3 1 2

Circa 1940's this two-storey townhouse offers 164sqm of endless potential. Ideal as a home base that you can lock up and leave while you travel or you may wish to take advantage of short stay income through Airbnb (stca)?

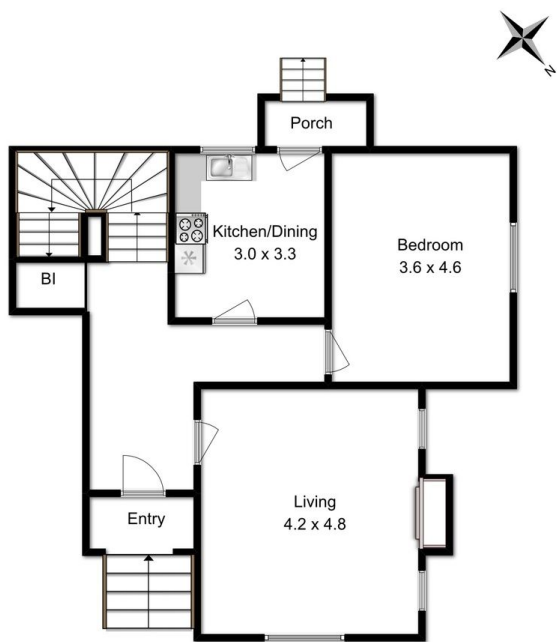
- Freshly painted inside and out
- New carpet throughout
- High ceilings and large bedrooms
- Separate lounge room with cosy wood heating
- Private rear backyard, two outbuildings
- Conveniently located, city is an approx. 20-minute walk
- The convenience of storage under the house

Great central location with an easy walk to nearby North Hobart that has a fabulous restaurant strip, with an appetising choice of modern restaurants and cafes as well as the State Cinema. This is one property not to miss. We

Building Size : 164 sqm
Land Size : 0.0245 ha
View : <https://www.katestoreyrealty.com.au/sale/tas/hobart-southern/new-town/residential/townhouse/5635509>

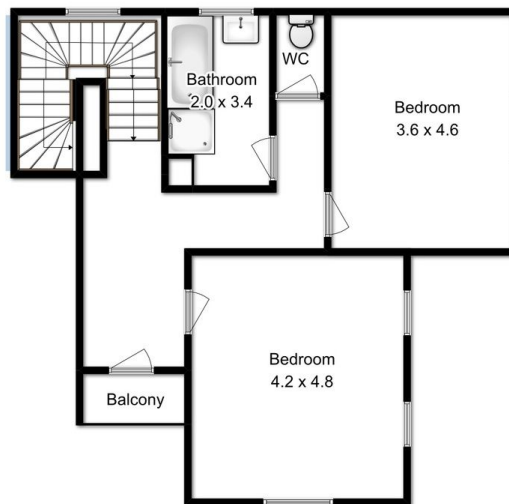


Kate Storey
03 6253 6095



Lower Level

Floor area approx 150sqm



Upper Level

All measurements are internal and approximate
This plan is a sketch for illustration not valuation
Produced by open2view.com for Kate Storey Realty

