



kate

reality



6 Parnella Road Dodges Ferry TAS

5 2 3

Introducing 6 Parnella Road, Dodges Ferry - a spacious 5-bedroom, 2-bathroom home with views over Frederick Henry Bay and Spectacle Island. While currently offering ample space and a convenient location for coastal living, this property also holds untapped potential, awaiting the vision of its new owners to transform it into their coastal retreat.

Perfectly positioned a 5-minute stroll from the picturesque Blue Lagoon and popular Park Beach, this residence offers the ultimate seaside lifestyle. Enjoy leisurely walks to local gems like the Park Cafe, Beach Bums, and Hillstreet Grocer, all conveniently located just minutes away.

As you step inside, you will be greeted by a charming kitchen and the warmth of wooden floorboards throughout. Original Myrtle, Sassafras and Oak timber accents lend a

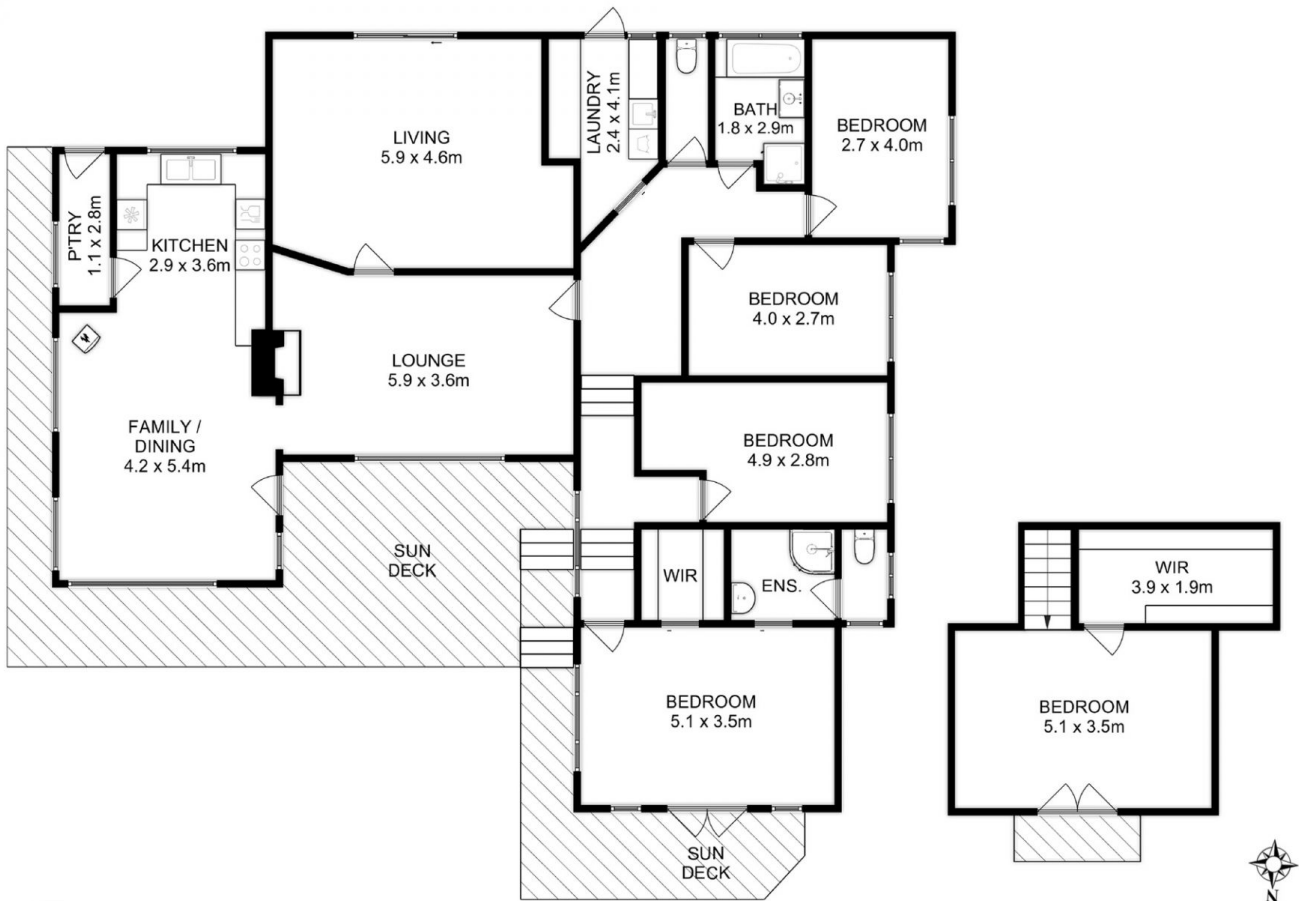
Price : Offers Over \$820,000
Building Size : 147 sqm
Land Size : 857 sqm
View : <http://www.katestoreyrealty.com.au/sale/tas/hobart-southern/dodges-ferry/residential/house/7989214>



Holly Johnson
0400 653 488



Emily Collins
03 6265 3000



Total Approx. Floor Area : 227 sqm

All measurements are internal and approximate.
This plan is a sketch for illustration, not valuation.
Produced by Open2view.com