



kate

reality



### 107 Pennington Drive Sorell TAS

3 2 2

Welcome to 107 Pennington Drive, Sorell - a family retreat nestled in a private haven. Boasting three bedrooms and two bathrooms, this residence is designed for comfort and practicality.

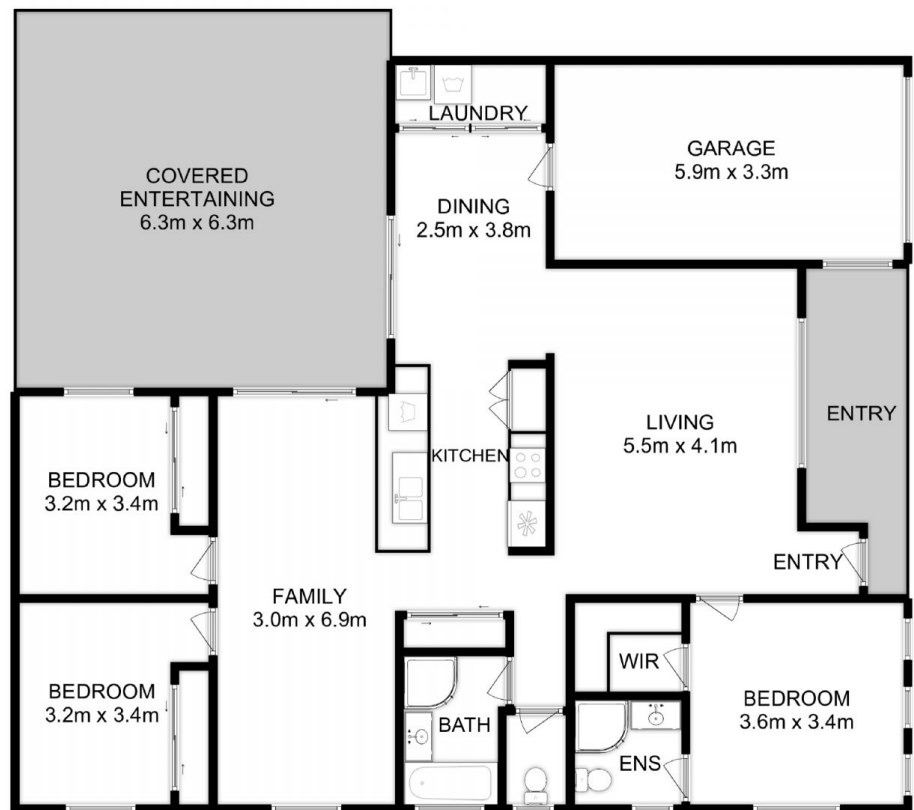
Upon entry, you're greeted by a warm and inviting atmosphere, where the main bedroom beckons with its walk-in robe and ensuite. The two additional bedrooms feature built-in wardrobes, offering plenty of storage space for the whole family.

Entertain with ease in the two separate living areas, providing flexibility for gatherings or quiet relaxation. The heart of the home lies in the kitchen, where culinary delights are crafted with ease. With its ample counter space, induction cooktop and pyrolytic oven, the kitchen transforms cooking into a delightful experience.

**Building Size** : 127 sqm  
**Land Size** : 583 sqm  
**View** : <http://www.katestoreyrealty.com.au/sale/tas/hobart-southern/sorell/residential/house/7979331>



**Emily Collins**  
03 6265 3000



Total Approx. Floor Area : 150 sqm  
Total Approx. Outbuilding Area : 9 sqm

All measurements are internal and approximate.  
This plan is a sketch for illustration, not valuation.  
Produced by Open2view.com