



kate

reality



1572 Nubeena Road Nubeena TAS

3 1 2

This immaculate residence set on just under 1.5 acres is nestled amongst the trees offering a true sense of privacy and tranquility.

The tidal Suckling Creek runs along one boundary and a nature reserve along part of another. The carefully planned gardens are a mixture of Australian Natives and Cottage Garden flowers. This hidden gem makes it possible to have the best of both worlds as a supermarket, doctor, chemist, ATM, post office and more are just a 5 minute stroll away. A short drive places you among some of Tasmania's finest natural vistas, constant reminders of the beauty of the Tasman Peninsula.

Step inside this recently painted abode and you'll find an open-plan living design that encompasses a spacious custom-designed quality kitchen, dining area and lounge, all with beautiful garden views. The open-plan design flows seamlessly on to a large timber decked area ideal for

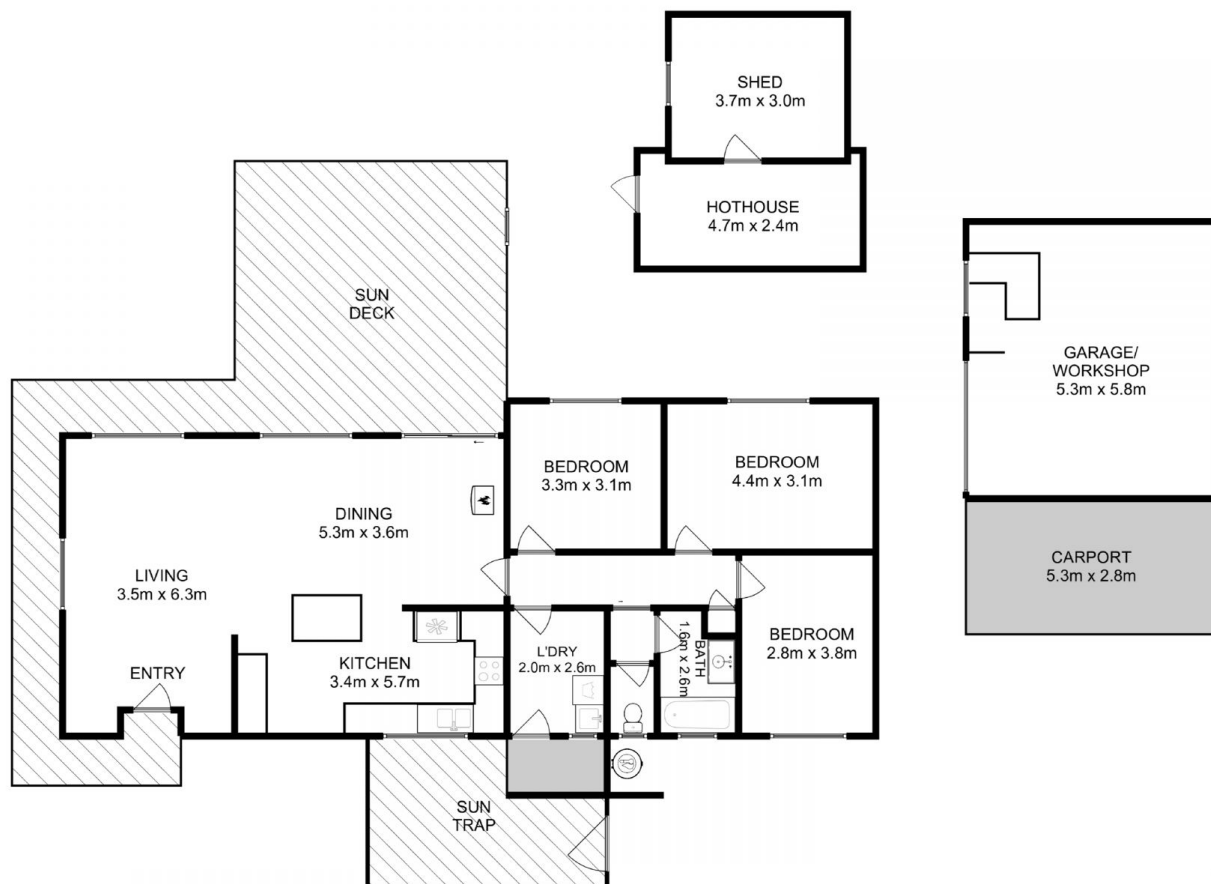
Price : \$ 598,050
Building Size : 121 sqm
Land Size : 5789 sqm
View : <http://www.katestoreyrealty.com.au/sale/tas/hobart-southern/nubeena/residential/house/7907515>




Kate Storey
03 6253 6095



Chloe Wright
(03) 6265 3000



Total Approx. Floor Area : 121 sqm
 Total Approx. Outbuilding Area : 53 sqm


 All measurements are internal and approximate.
 This plan is a sketch for illustration, not valuation.
 Produced by Open2view.com