



kate

reality



6 Wards Avenue Lewisham TAS

4 2 4

This delightful, light filled four-bedroom home is the perfect example of family living. Within easy proximity to the Township of Sorell, this property offers the perfect blend of rural serenity and urban convenience.

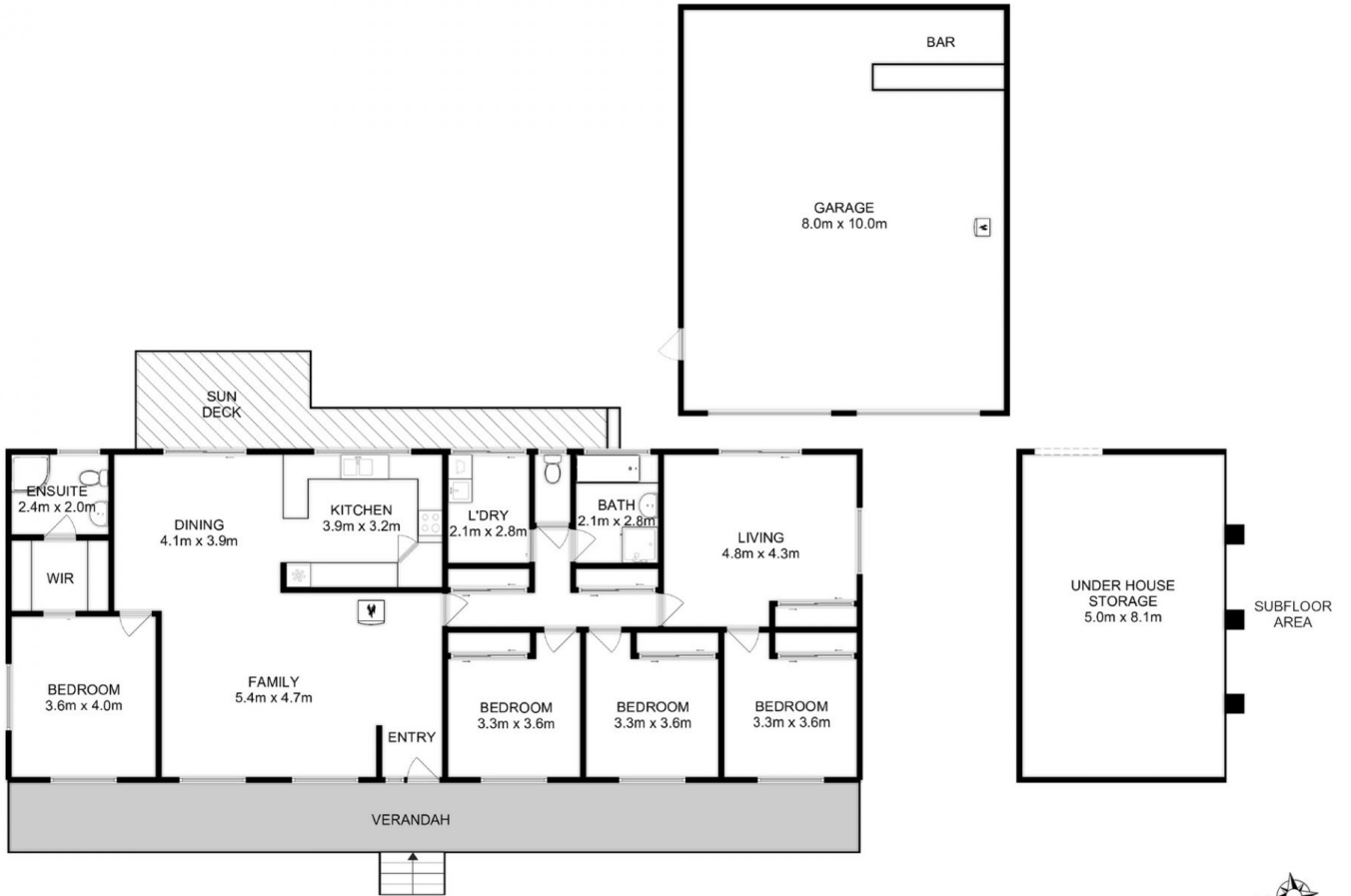
As you step inside, you'll be greeted by a light and bright interior, complemented by an open-plan living space, creating a warm and inviting atmosphere for family gatherings.

The kitchen, features a sizable benchtop and stainless-steel appliances, a gas cooktop, and a dishwasher. This space seamlessly integrates with the dining area, and a spacious living room warmed by a wood heater and a reverse cycle air conditioner, ensuring year-round comfort and relaxation for the family.

Price : \$ 860,000
Building Size : 182 sqm
Land Size : 5000 sqm
View : <http://www.katestoreyrealty.com.au/sale/tas/hobart-southern/lewisham/residential/house/7878933>



Emily Collins
03 6265 3000



Total Approx. Floor Area : 180 sqm
 Total Approx. Outbuilding Area : 80 sqm

All measurements are internal and approximate.
 This plan is a sketch for illustration, not valuation.
 Produced by Open2view.com