



kate

reality



52 Lewisham Scenic Drive Lewisham TAS

6 2 2

Welcome to a home that effortlessly embraces the needs of modern family living with its, stunning views, and versatile dual living options.

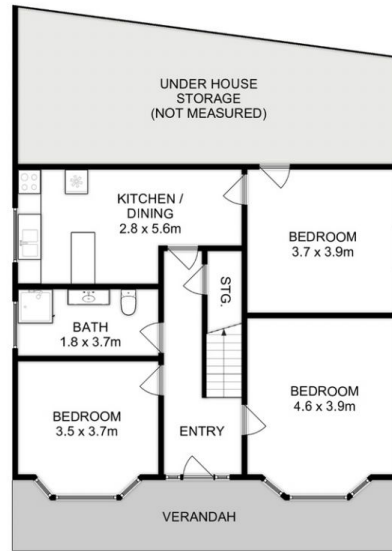
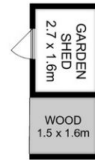
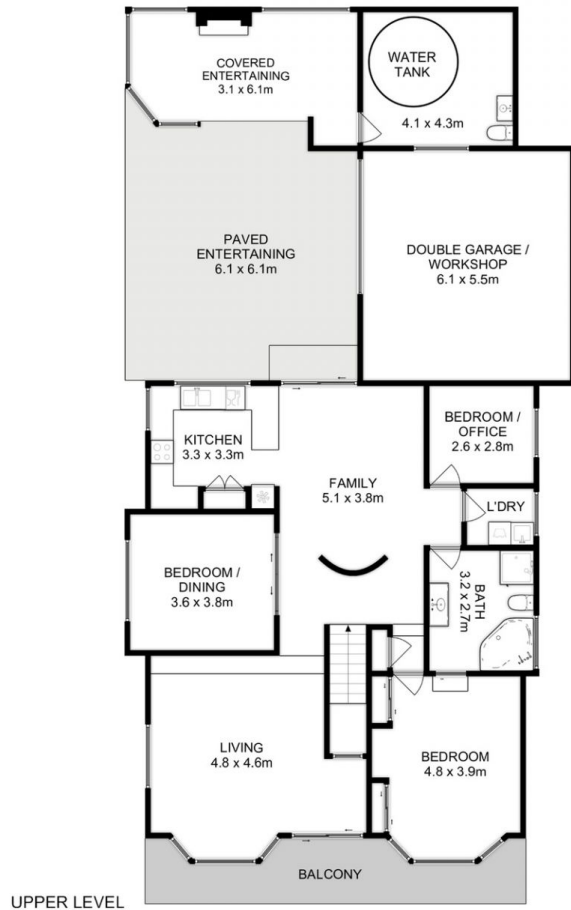
This expansive residence offers an ideal haven for a large or blended family, providing not only ample space for everyone but also unique opportunities for independent living arrangements. With two kitchens and living areas, this home effortlessly accommodates for older children seeking independence, grandparents desiring a comfortable space, or the potential for generating income through Airbnb or tenancy.

The modern interior boasts a flexible floor plan, providing the perfect canvas for a variety of family living arrangements.

Price : Offers Over \$998,000
Building Size : 213 sqm
Land Size : 666 sqm
View : <http://www.katestoreyrealty.com.au/sale/tas/hobart-southern/lewisham/residential/house/7831763>



Emily Collins
03 6265 3000



Total Approx. Floor Area : 220 sqm
Total Approx. Outbuilding Area : 76 sqm

All measurements are internal and approximate.
This plan is a sketch for illustration, not valuation.
Produced by Open2view.com