



kate

reality



### 91 Sommers Bay Road Murdunna TAS

3 1

Nestled in an idyllic coastal setting, this charming 3-bedroom residence embodies the essence of seaside living, boasting scenic vistas of King George Sound and Grave Island. Set against the stunning backdrop of Mount Wellington, this home welcomes you into an inviting open plan layout, seamlessly integrating the kitchen, living, and dining areas to create a warm and inviting atmosphere for both relaxation and entertainment.

Step outside, and the beauty of this location unfolds - the property sits just a stone's throw away from the water's edge, with only a road and coastal reserve separating you from the tranquil shores. Imagine waking up to the soothing sounds of waves gently lapping the foreshore, providing a symphony of tranquility right at your doorstep.

A standout feature of this coastal haven is the inclusion of a

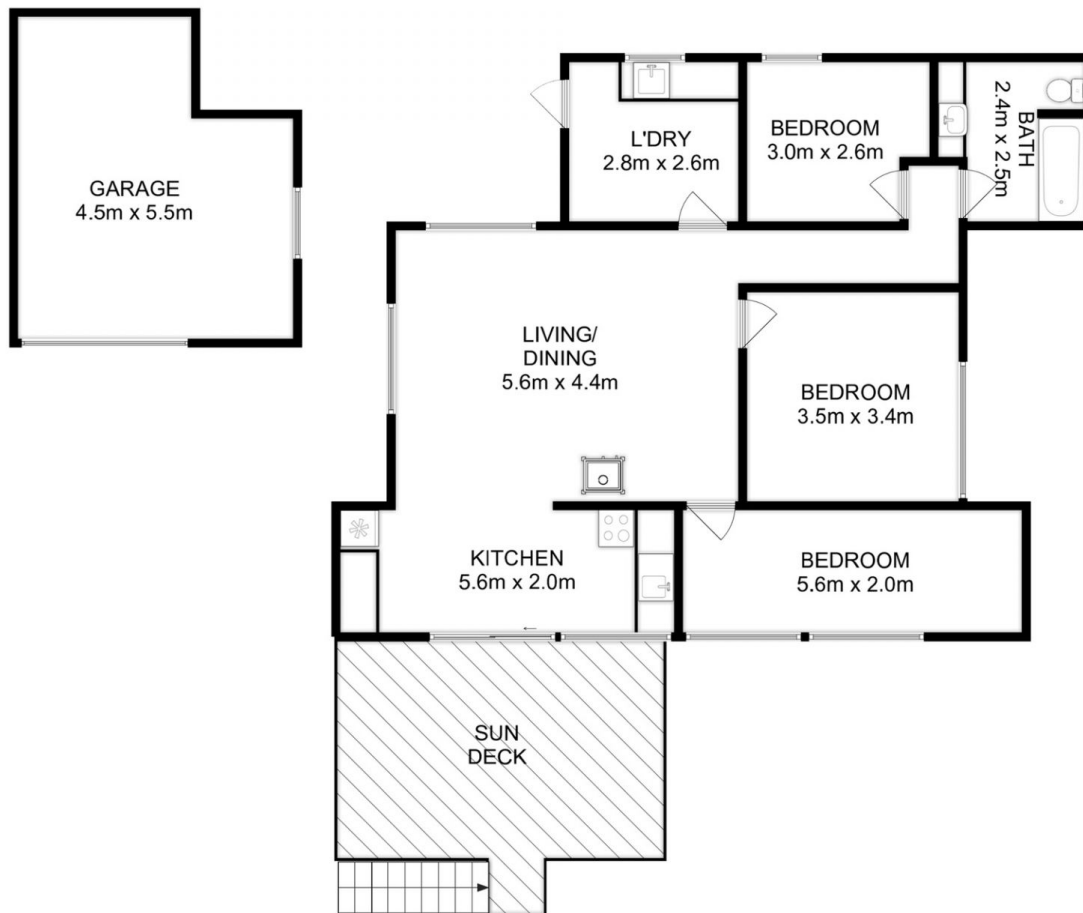
|                      |   |
|----------------------|---|
| <b>Price</b>         | : Offers Over \$499,000   |
| <b>Building Size</b> | : 92 sqm  |
| <b>Land Size</b>     | : 1011 sqm  |
| <b>View</b>          | : <a href="http://www.katestoreyrealty.com.au/sale/tas/hobart-southern/murdunna/residential/house/7827269">http://www.katestoreyrealty.com.au/sale/tas/hobart-southern/murdunna/residential/house/7827269</a> |



**Kate Storey**  
03 6253 6095



**Chloe Wright**  
(03) 6265 3000



Total Approx. Floor Area : 92 sqm  
 Total Approx. Outbuilding Area : 21 sqm

All measurements are internal and approximate.  
 This plan is a sketch for illustration, not valuation.  
 Produced by Open2view.com

