



kate

reality



8 Sloping Main Drive Sloping Main TAS

2 1 1

Welcome to this charming beach house nestled in the highly sought-after Sloping Main area. Immerse yourself in coastal living with two inviting bedrooms and the timeless elegance of timber floorboards that grace the interiors. The spacious kitchen, adorned with modern amenities, beckons culinary enthusiasts to craft delightful meals.

A well-maintained bathroom and a compact laundry area complement the functional layout, ensuring a seamless lifestyle. Venture outdoors to discover an expansive deck, perfect for embracing the coastal breeze and enjoying mesmerizing glimpses of the nearby water. Additionally, a convenient shed stands ready to accommodate your storage needs, enhancing the property's practicality.

Never worry about parking with the included under-cover space, providing protection for your vehicle. The allure of

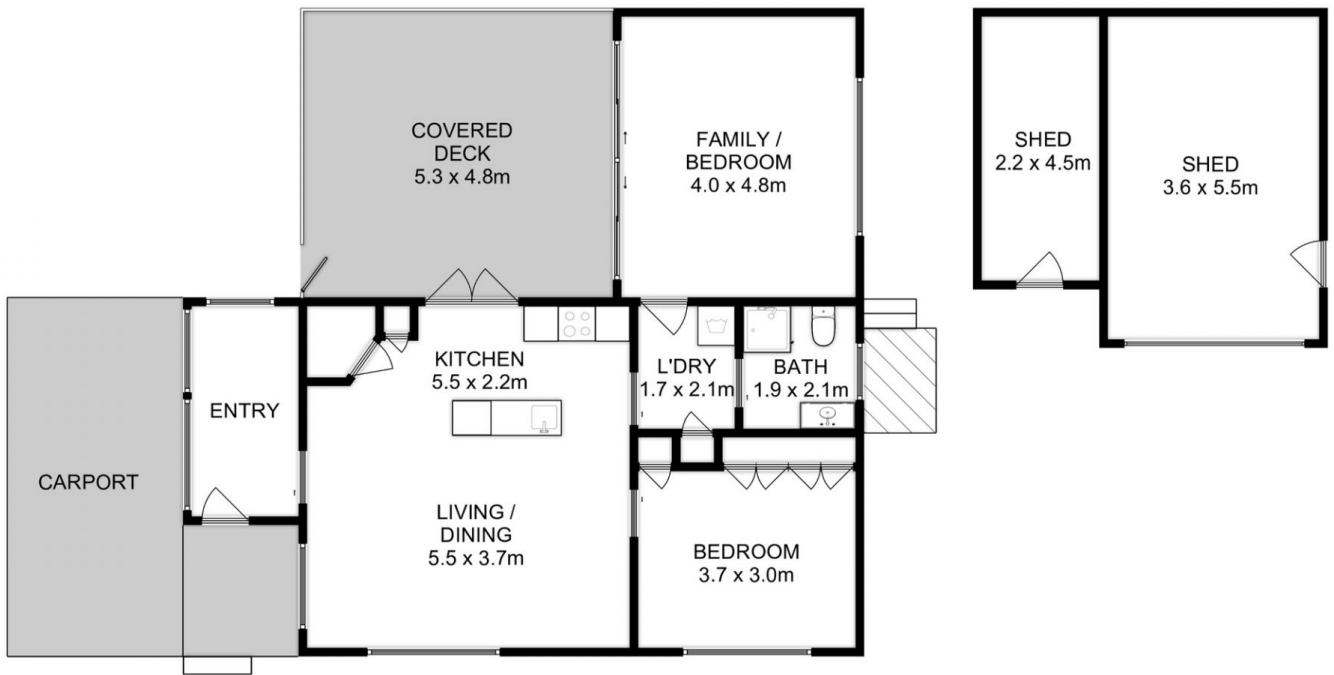
Price : Offers Over \$448,000
Building Size : 89 sqm
Land Size : 564 sqm
View : <http://www.katestoreyrealty.com.au/sale/tas/hobart-southern/sloping-main/residential/house/7789718>



Kate Storey
03 6253 6095



Chloe Wright
(03) 6265 3000



Total Approx. Floor Area : 89 sqm
 Total Approx. Outbuilding Area : 33 sqm



All measurements are internal and approximate.
 This plan is a sketch for illustration, not valuation.
 Produced by Open2view.com