



12 Mary Street Lewisham TAS

4  2  8 

Welcome to a serene retreat where stunning water views and modern comforts meet. This isn't just a house; it's a 'staycation' haven. From panoramic vistas of Pittwater to the grandeur of Frederick Henry Bay, enjoy mesmerizing 180-degree views that capture the crashing waves of Seven Mile Beach. Tucked into the hills, the property offers privacy and tranquility, while the architectural design ensures breathtaking water views from every corner.

Upon entry of the spacious foyer, commences the beginning of the "Wow factor" that continues throughout this home. The kitchen, equipped with high-end integrated appliances, a seamless island bench, and ample storage, is ideal for any aspiring chef.

The primary bedroom, located in the eastern wing, features stunning water views, a fully tiled ensuite with heated floors, and a walk-in robe. A media room or and second

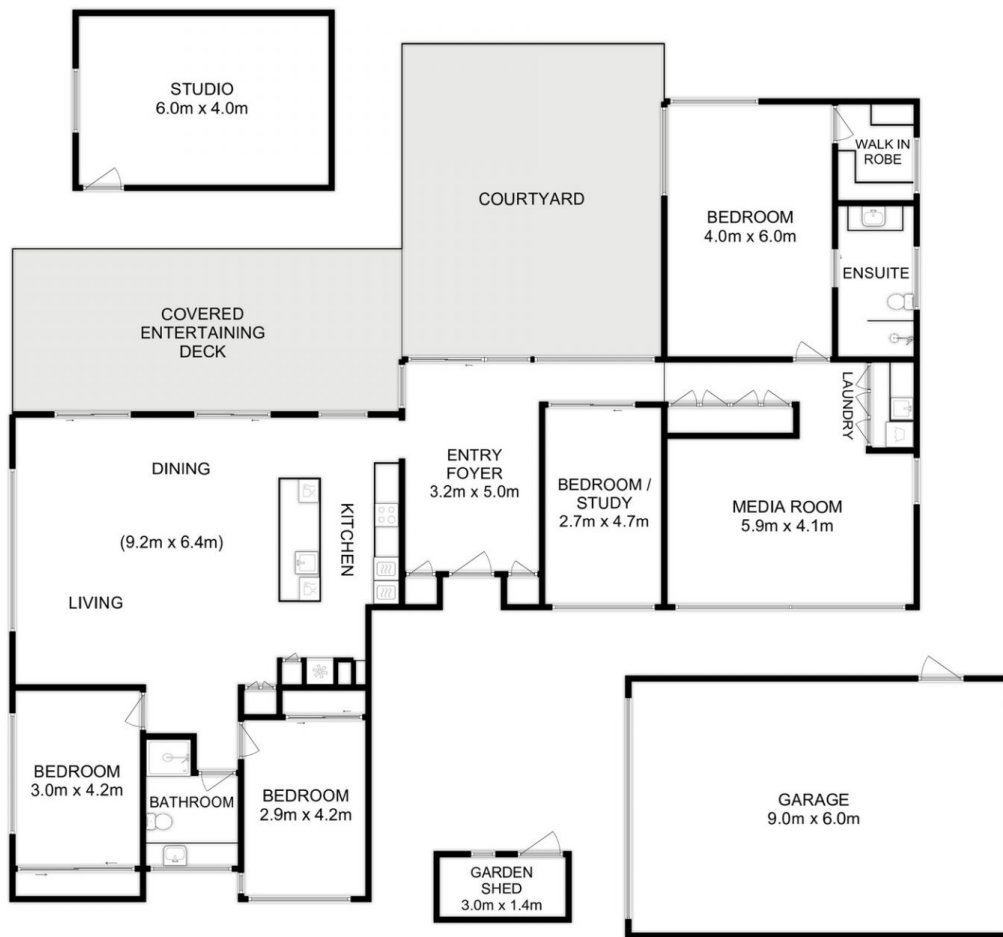
Price	: Price Guide Around \$1,350,000
Building Size	: 205 sqm
Land Size	: 3937 sqm
View	: http://www.katestoreyrealty.com.au/sale/tas/hobart-southern/lewisham/residential/house/7780949



Kate Storey
03 6253 6095



Chloe Wright
(03) 6265 3000



Total Approx. Floor Area : 205 sqm
Total Approx. Outbuilding Area : 82 sqm

All measurements are internal and approximate.
This plan is a sketch for illustration, not valuation.
Produced by Open2view.com