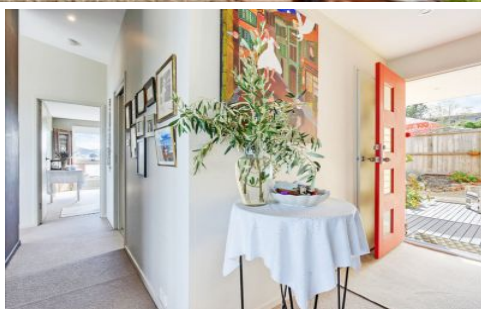




kate

reality



5 Boyd Street LEWISHAM TAS

3  1  2 

Stunning uninterrupted 180-degree water views of beaches, islands and beyond to Mount Wellington. Majestically poised this boutique home captures all day sun and boasts privacy.

View : <http://www.katestoreyrealty.com.au/lease/tas/hobart-southern/lewisham/residential/house/7734573>

Upon entry, the properties interior design is sleek and modern and has been constructed on two levels. The upper level of the home is open plan and boasts modern living. The lounge (complete with reverse cycle cooling/heating) dining and kitchen areas flow outside to the undercover deck, capturing those gorgeous water views and sublime sunsets. This level also provides two queen sized bedrooms with generous robe space.



Sophie Walden
0362653000

The main bathroom, also on this level comprises of an elegant shower, vanity and a separate toilet. There is also a smart open plan laundry with front loader washing