



kate

reality



Boundaries approx.



### 154 Arthur Highway Dunalley TAS

3 2 2

Building new homes can be expensive and takes time. Avoid the stress with this luxury home ready for Summer enjoyment. Situated on the tourist route to the Tasman Peninsula there is everything you need for a relaxed lifestyle with beautiful bays, golf course, tennis courts, bakery, and cafes; all within walking distance.

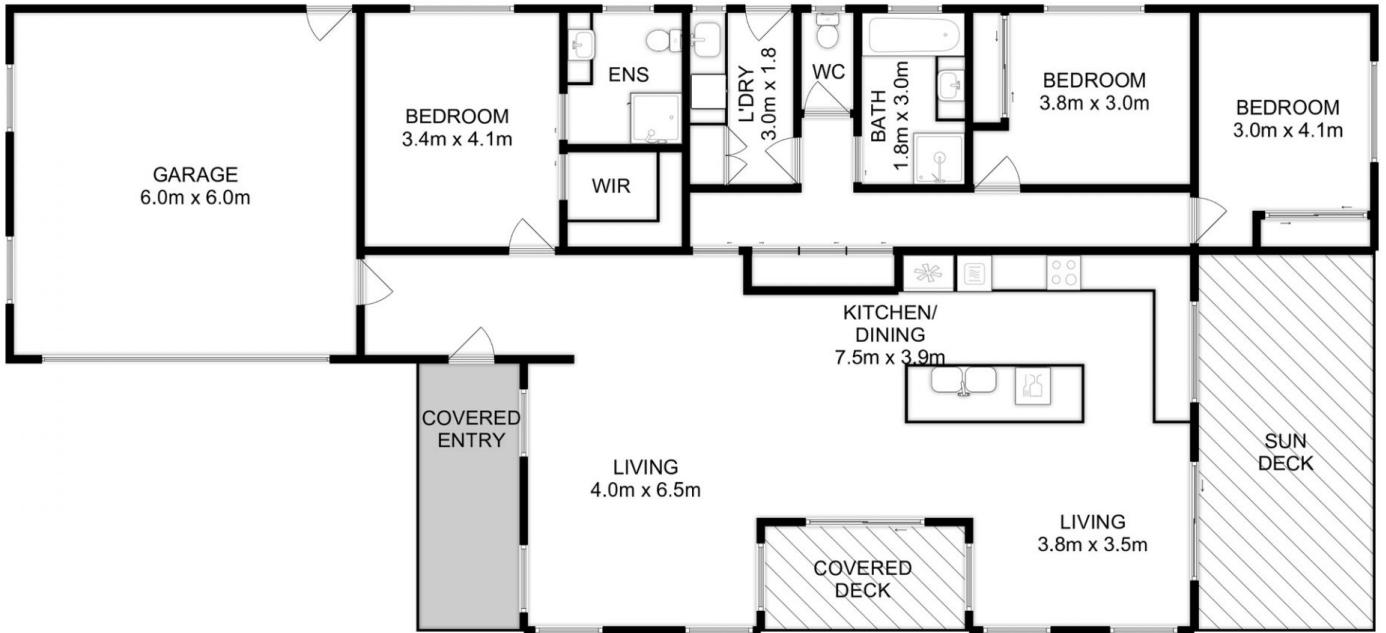
The light-filled dream kitchen features an island bar for casual dining, topped with Caesar stone. The 'Miele' induction cook-top, built-in oven and dishwasher make cooking and clean-up a pleasure. From the adjoining living room the large sliding doors take you to the outdoor deck for barbecues and Alfresco dining.

The massive back yard provides a flat grassed area for a future food garden, or children's play area with loads of space to run. The 2706m2 block gives so many options, yet

**Price** : \$ 835,000  
**Land Size** : 2706 sqm  
**View** : <http://www.katestoreyrealty.com.au/sale/tas/hobart-southern/dunalley/residential/house/7725130>



**Sharon King**  
**(03) 6253 6095**



Total Approx. Floor Area (inc garage) : 195 sqm  
 Total Approx. Deck Area : 26 sqm

All measurements are internal and approximate.  
 This plan is a sketch for illustration, not valuation.  
 Produced by Open2view.com