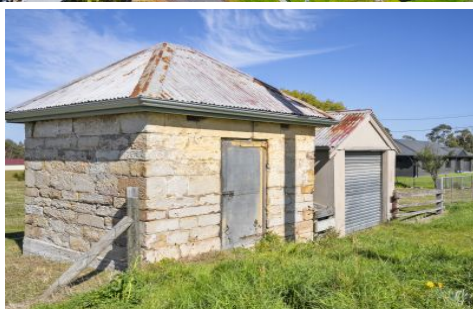




kate

reality



6 Franklin Street Dunalley TAS



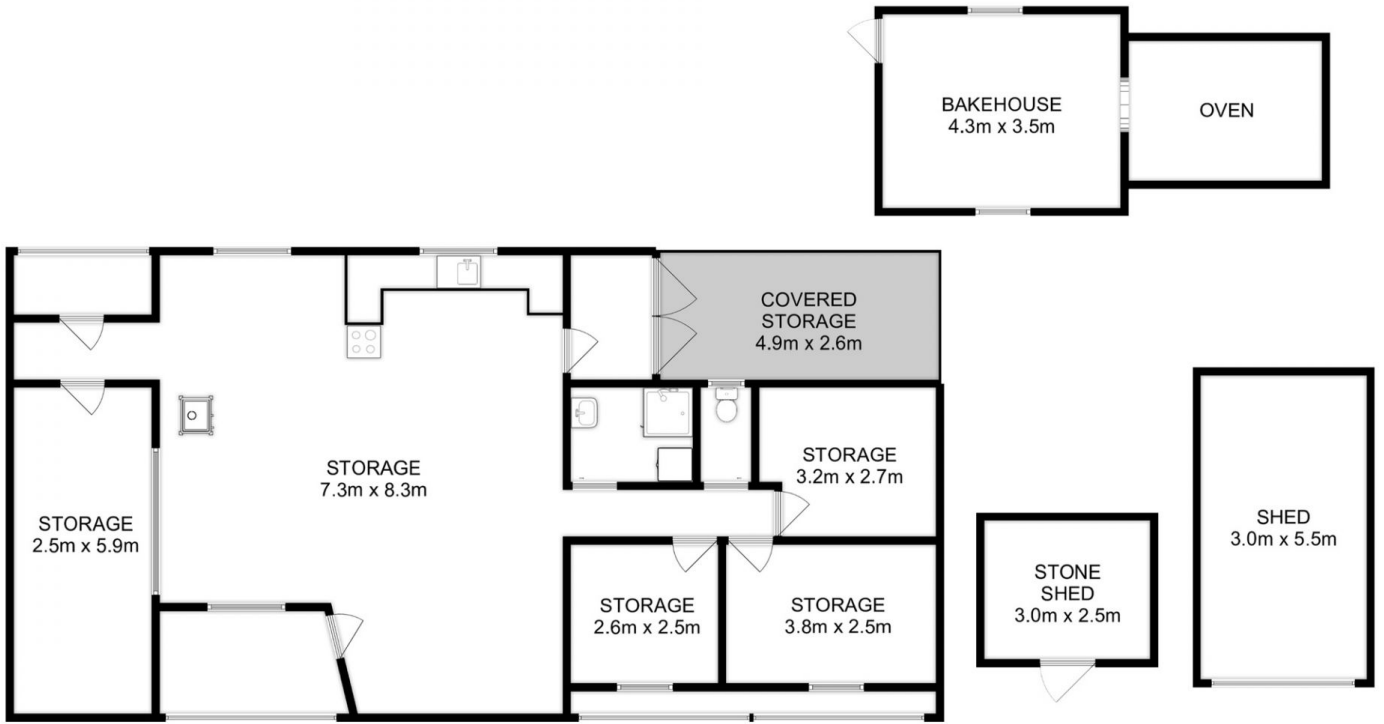
This block has so much to offer, with an acre of gentle sloping land in the heart of Dunalley, overlooking the tranquil bay. A massive fully-lined shed has assorted storage rooms, with a sink, toilet and shower. Water is collected from roof and stored in the poly water tank to supply fresh water seamlessly. The many power points within the shed make this a perfect work or hobby space. If you have a guitar make some music with friends, in a comfortable warm environment, complete with wood heater and a stack of wood.

The outbuildings have Tasmanian Historic significance with the original bakehouse still in working condition. Imagine hosting a pizza night using the wood-fired oven and inviting family and friends for celebrations. Bring the caravan and boat for weekend getaways or longer holidays.

Price : \$ 442,000
Land Size : 4047 sqm
View : <http://www.katestoreyrealty.com.au/sale/tas/hobart-southern/dunalley/residential/land/7723976>



Sharon King
(03) 6253 6095



Total Approx. Main Shed Area : 134 sqm
 Total Approx. Other Area : 39 sqm



All measurements are internal and approximate.
 This plan is a sketch for illustration, not valuation.
 Produced by Open2view.com