



9 Linden Road Primrose Sands TAS

2  1 

With mesmerizing views over Fredrick Henry Bay and over to Sloping Island and Lime Bay, providing a tranquil retreat for holidaymakers seeking serenity and natural beauty.

The sunroom upon entry offers a cozy room to enjoy the scenery all year round, complete with a wood heater to keep you warm during those cooler evenings. Imagine waking up to the gentle sound of waves and sipping your morning coffee at the breakfast bar, soaking in the panoramic views.

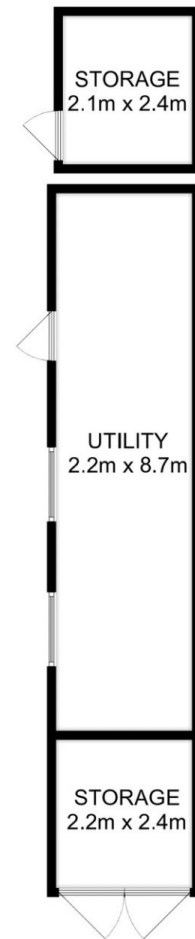
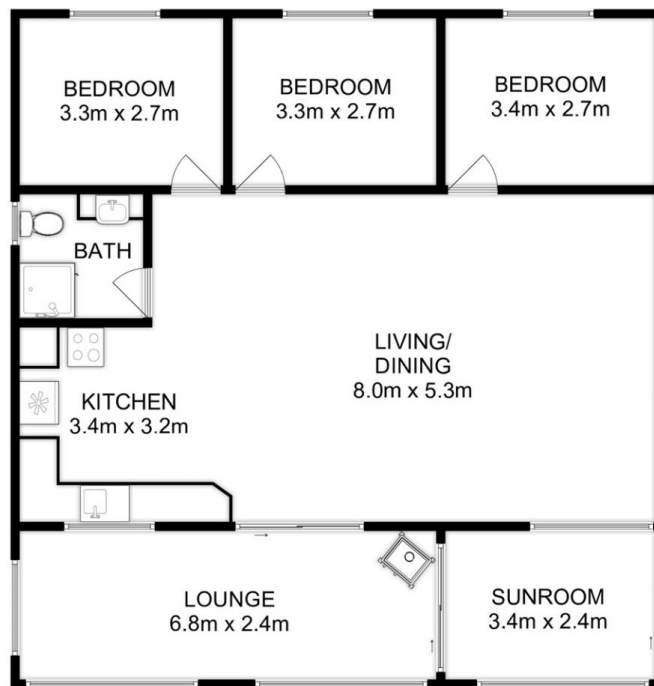
Open plan living, kitchen, dining area is a large space with plenty of room to entertain guest, the kitchen has everything you need with ample bench space.

The property boasts two bedrooms and a study/office space, providing ample space for family and guests. The main bathroom ensures modern convenience, with an

Price : Offers Over \$740,000
Land Size : 589 sqm
View : <http://www.katestoreyrealty.com.au/sale/tas/hobart-southern/primrose-sands/residential/house/7685514>



Emily Collins
 03 6265 3000



Total Approx. Floor Area : 117 sqm
 Total Approx. Outbuilding Area : 30 sqm

All measurements are internal and approximate.
 This plan is a sketch for illustration, not valuation.
 Produced by Open2view.com