



kate

reality



### 823 Bream Creek Road Kelleve TAS

5 🛏 2 🚗 13 🚗

Both the "Main House" and "The Cabin" are nestled within the serene rolling hills of the East Coast of Tasmania, offering both lifestyle and income.

Approximately 45 minutes from Hobart, 35 minutes from Hobart Airport and 15 minutes from Dunalley, where the local Primary School is located. A world of beaches nearby, many of them are within 5-15 minutes drive away. The choice of beautiful child-safe beaches or our dramatic surf beaches are all just a short trip away in the car.

**Price** : Offers Over \$1.69 Mill  
**Building Size** : 289 sqm  
**Land Size** : 6 ha  
**View** : <http://www.katestoreyrealty.com.au/sale/tas/hobart-southern/kelleve/residential/house/7566320>

#### "The Main House"

- ? 4 bedrooms / 1.5 bathrooms / 3 car garage / 6 additional cars outside
- ? 360 degree sweeping views from Maria Island to Mt Wellington
- ? Two living areas plus the parents retreat upstairs

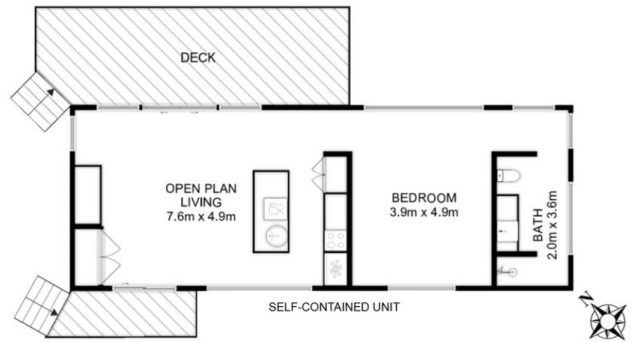
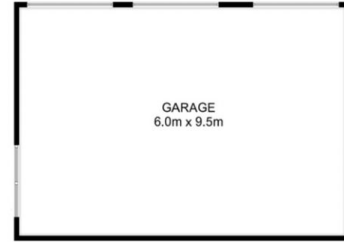


**Kate Storey**  
03 6253 6095



**Chloe Wright**  
(03) 6265 3000

MAIN HOUSE



Total Approx. Main Houe Floor Area : 216 sqm  
 Total Approx. Unit Floor Area : 73 sqm  
 Total Approx. Garage Area : 57 sqm

All measurements are internal and approximate.  
 This plan is a sketch for illustration, not valuation.  
 Produced by Open2view.com