



kate

reality



### 26 Sloping Main Drive Sloping Main TAS

3 1 11

This circa 1890's home that was previously the old Post Office will instantly transport you to a 'good life' with only a quiet road between you and the beach. Step out of your front door and your toes are nearly in the sand.

This is the first time this wonderful property is offered to the open market, with ownership previously passed between family and friends. A unique, original time capsule that still holds it's warm, homely essence.

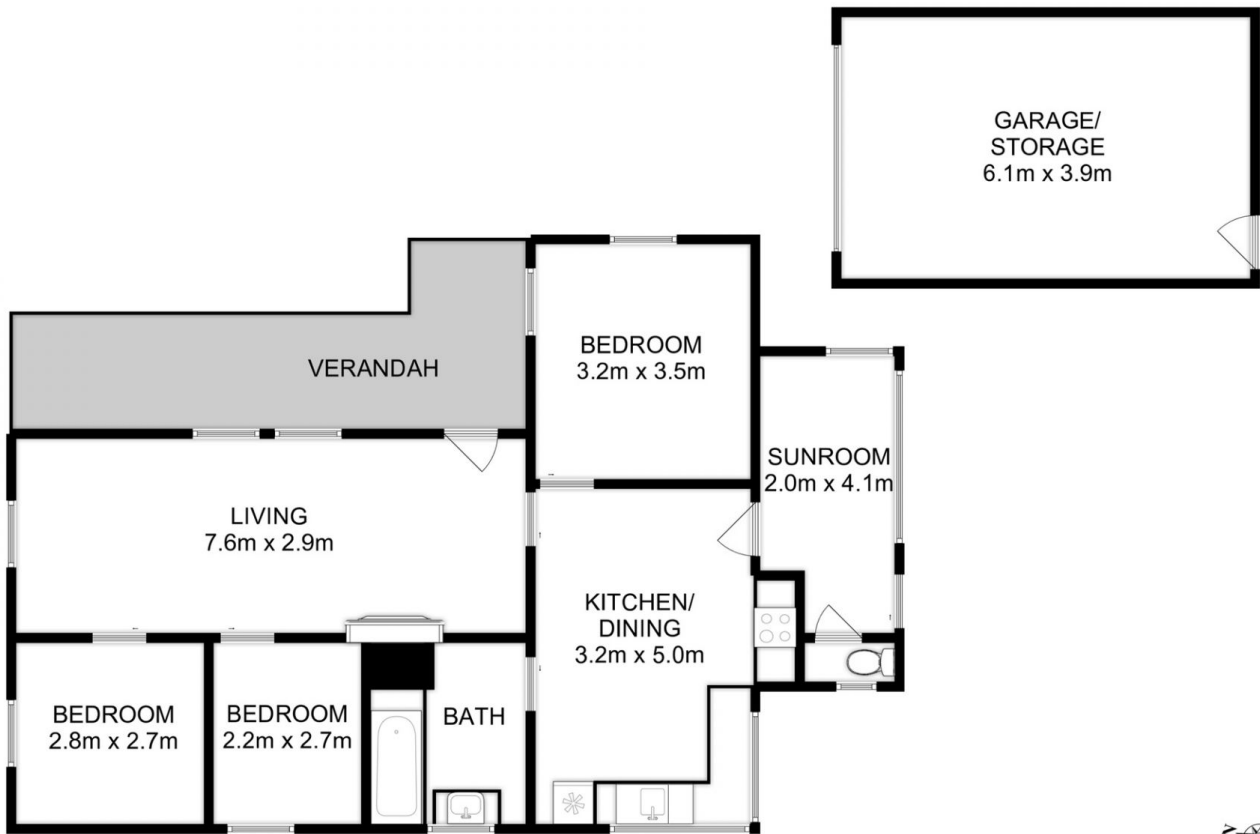
The current owners are happy to leave furniture so they can walk out and you can walk in. Lovingly maintained; this 3-bedroom home would be the perfect place for retirement or to bring the family together for weekends and special occasions.

? Three bedrooms plus sunroom

**Price** : \$ 645,000  
**Building Size** : 89 sqm  
**Land Size** : 1020 sqm  
**View** : <http://www.katestoreyrealty.com.au/sale/tas/hobart-southern/sloping-main/residential/house/7435213>



**Kate Storey**  
03 6253 6095



Total Approx. Floor Area : 89 sqm  
Total Approx. Outbuilding Area : 24 sqm

All measurements are internal and approximate.  
This plan is a sketch for illustration, not valuation.  
Produced by Open2view.com