



kate

reality



145 Sloping Main Drive Sloping Main TAS

3  1 

A rare opportunity to secure this circa 1964 beach shack adjoining the beachfront Reserve of the popular Sloping Main Beach. The panoramic views extend beyond Mt Wellington, taking in Frederick Henry Bay and Sloping Island. Create your own future haven joining absolute beachfront. 'Orana Marella' can become your perfect holiday destination or permanent place to call home.

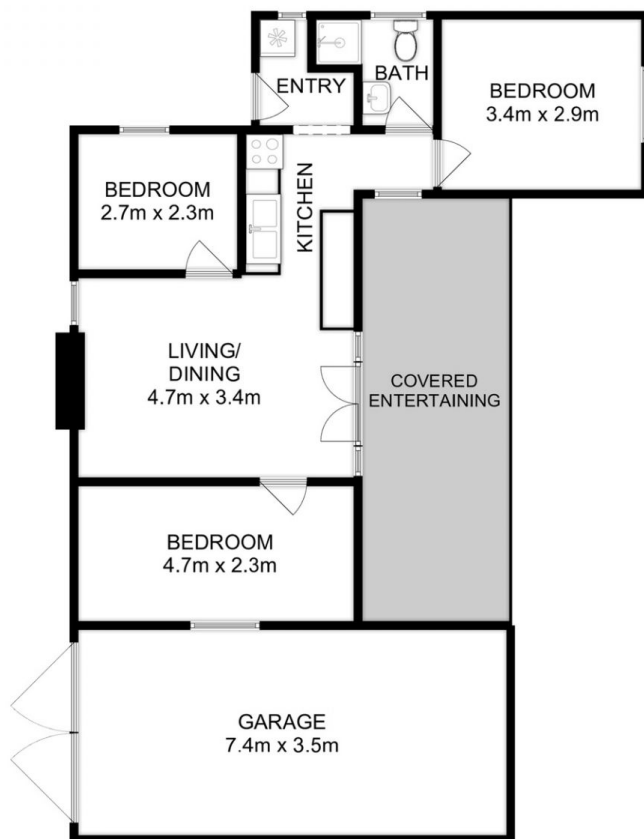
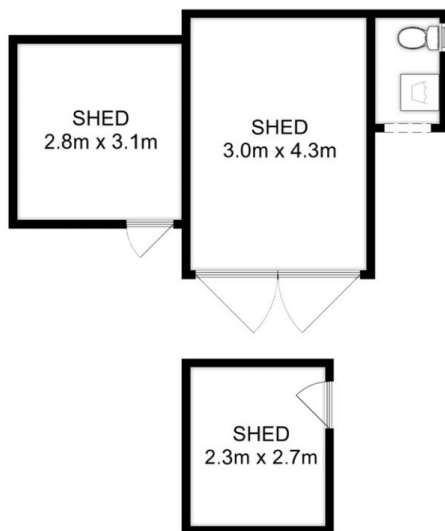
This beach shack/home has an open plan kitchen/dining/living area, 3 bedrooms and a separate bathroom. The beginnings of renovations are seen in the kitchen with scope to continue renovations or start again and build your dream home (STCA)

The living is the perfect place to wind down for the day with the crackling of an open fire. Glass panelled doors flood the home with light and you can soak in the magnificent

Building Size : 58 sqm
Land Size : 784 sqm
View : <http://www.katestoreyrealty.com.au/sale/tas/hobart-southern/sloping-main/residential/house/7326325>



Niahn Palmer
03 6253 6095



Total Approx. Floor Area : 90 sqm
Total Approx. Outbuilding Area : 30 sqm

All measurements are internal and approximate.
This plan is a sketch for illustration, not valuation.
Produced by Open2view.com