



## 111 Nubeena Road Taranna TAS

10 

This unique Queenslander styled residence was purpose built as a B&B and holds a 1B license which allows rental of the accommodation. Set on 45 acres on Sympathy Hill in Taranna, Tasmania it has multi-million-dollar sea views with expansive vistas overlooking Newmans Beach and Norfolk Bay towards Mt Wellington.

This property offers many features and has a schedule of rental dates booked through to spring 2023. All future bookings will be handed over with the sale of the property. The sale also comes with a purpose-built website (<https://www.threecapesandtasmantlodge.com.au/>) which can be further activated to promote booking potential.

The main house features 6 bedrooms, each with its own ensuite offering comfortable accommodation for 11 guests. Three bedrooms have stunning views across the Tasman

**Price** : \$1.55 million  
**Building Size** : 180 sqm  
**Land Size** : 46.15 Acres  
**View** : <http://www.katestoreyrealty.com.au/sale/tas/hobart-southern/taranna/commercial/other/7224474>

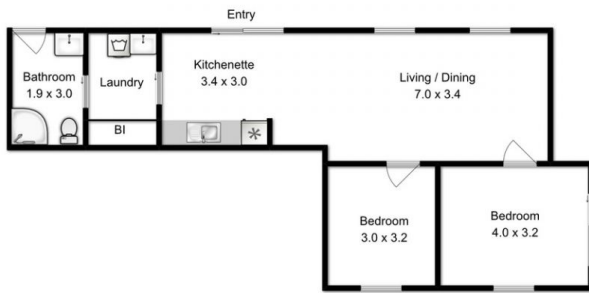


**Kate Storey**  
03 6253 6095



**Chloe Wright**  
(03) 6265 3000

# Downstairs Unit



Upper Level 180sqm  
Downstairs Unit 73sqm  
Total Area approx 253sqm

All measurements are internal and approximate  
This plan is a sketch for illustration not valuation  
Produced by open2view.com for Kate Storey Realty