



kate

reality



111 Nubeena Road Taranna TAS

8 7

This unique Queenslander styled residence was purpose built as a B&B but it is equally suited as a large family home with room for visitors. Sales includes the 1B license which allows rental of the accommodation. Set on 45 acres on Sympathy Hill in Taranna, Tasmania, enjoying multi-million dollar sea views with expansive vistas overlooking Newmans Beach and Norfolk Bay towards Mt Wellington.

This property offers many features to suit a discerning buyer: The main house features 6 bedrooms, each with its own ensuite offering comfortable accommodation for 11 guests. Three bedrooms have stunning views across the Tasman coast and three bedrooms face the beautiful private bushland setting. All bedrooms feature double doors that open onto the large wrap around verandah. The main house also features 2 living areas with dining space

Price : \$1.55 million
Building Size : 180 sqm
Land Size : 186800 sqm
View : <http://www.katestoreyrealty.com.au/sale/tas/hobart-southern/taranna/residential/house/7221079>

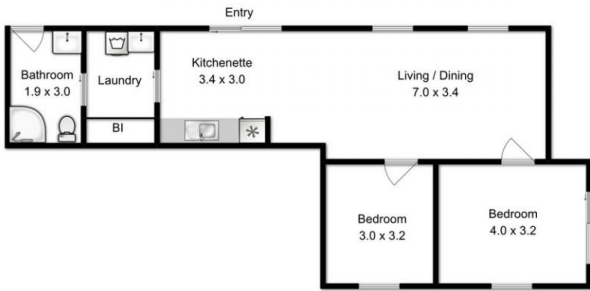


Kate Storey
03 6253 6095



Chloe Wright
(03) 6265 3000

Downstairs Unit



Upper Level 180sqm
Downstairs Unit 73sqm
Total Area approx 253sqm

All measurements are internal and approximate
This plan is a sketch for illustration not valuation
Produced by open2view.com for Kate Storey Realty