



kate

reality



15 Brady Street Midway Point TAS

3 2 2

This versatile home with its captivating water views is bound to tick the boxes of those looking to move to popular and convenient Midway Point.

Entering this home through the enclosed porch, you will first notice how much natural light floods through the large front windows.

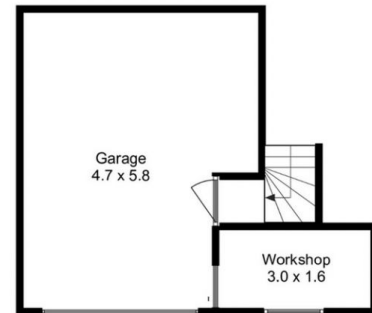
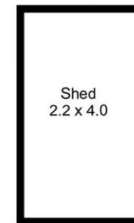
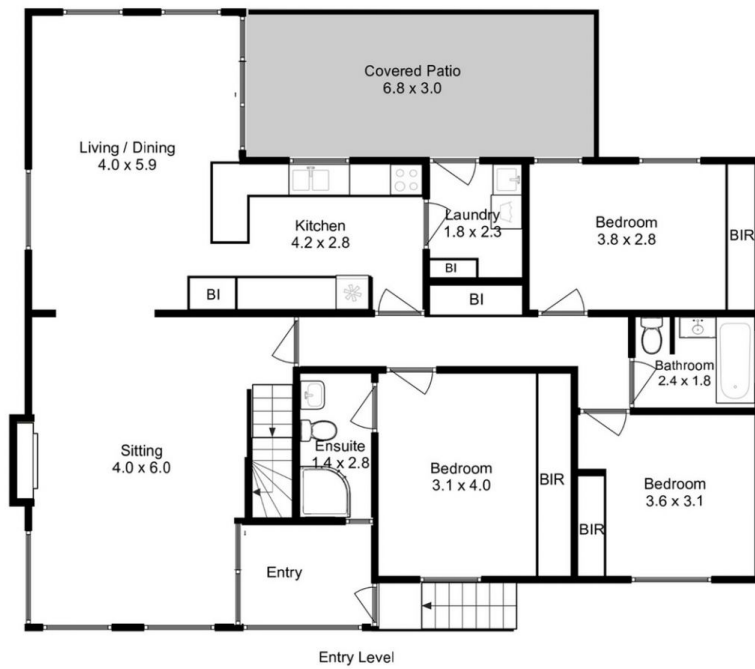
The flexible floor plan offers you the choice of informal and formal living /dining zones, while the open plan layout keeps the family together.

The beautiful timber floors flow from the front sitting room, into the kitchen and dining, bouncing light and warmth throughout the space. Soft and warm underfoot, there is carpet in the bedrooms and the lounge room.

Price : \$ 588,000
Building Size : 118 sqm
Land Size : 756 sqm
View : <http://www.katestoreyrealty.com.au/sale/tas/hobart-southern/midway-point/residential/house/7128539>



Kate Storey
03 6253 6095



Approx. Floor Area : 130 sqm
Approx. Lower Level Area : 33 sqm

All measurements are internal and approximate.
This plan is a sketch for illustration, not valuation.
Produced by Open2view.com