



kate

reality



### 60 Riviera Drive Carlton TAS

3 2 4

This beautifully crafted and designed 2019 home is positioned perfectly in a quiet cul-de-sac in the seaside suburb of Carlton.

Entering the property, you will notice that the home has been cleverly located on the block to maximise the space, whether you are looking for more garden, more sheds, more decks or somewhere to park the boat.

Once inside the home, you are greeted with flooding natural light, highlighted by the elevated ceilings in the living spaces.

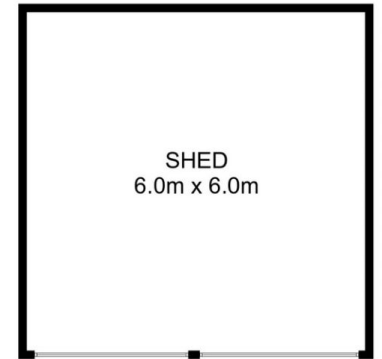
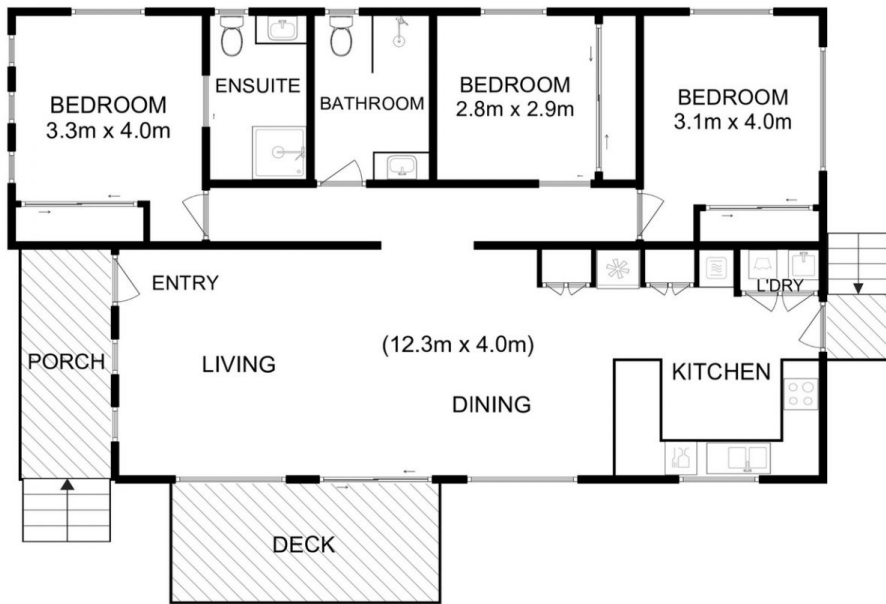
The contemporary open plan design makes for easy living and offers a neutral palette throughout.

The kitchen is well equipped with loads of storage and

**Price** : \$ 735,000  
**Building Size** : 115 sqm  
**Land Size** : 2025 sqm  
**View** : <http://www.katestoreyrealty.com.au/sale/tas/hobart-southern/carlton/residential/house/7014000>



**Donna Wooley**  
03 6265 3000



Total Approx. Floor Area : 115 sqm  
Total Approx. Outbuilding Area : 36 sqm



All measurements are internal and approximate.  
This plan is a sketch for illustration, not valuation.  
Produced by Open2view.com