



kate

reality



### 103 Bally Park Road Dodges Ferry TAS

1 1 1

This bespoke built home has been constructed with love and consideration and with sustainability in mind, to create a comfortable home with opportunity for its new owner to extend if they so wish.

The timber clad facade welcomes you with warmth and charm, which continues the moment you step inside.

The galley style kitchen is contemporary and flows into the open plan lower level. The stunning timber floors complement the natural timbers throughout and provide a neutral base to which the stunning ocean and sky views flood through the cleverly positioned windows and doors.

The bathroom with walk in shower and stunning Italian tiles has access to the deck which allows the view to fill the room, making it a beautiful way to start the day.

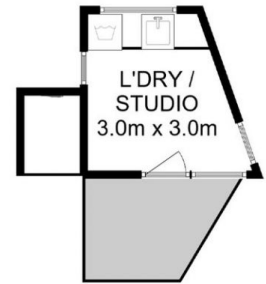
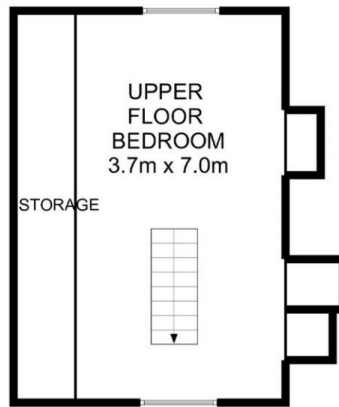
**Price** : \$ 661,000  
**Building Size** : 67.5 sqm  
**Land Size** : 669 sqm  
**View** : <http://www.katestoreyrealty.com.au/sale/tas/hobart-southern/dodges-ferry/residential/house/6578287>



**Emily Collins**  
03 6265 3000



**Donna Wooley**  
03 6265 3000



All measurements are internal and approximate.  
This plan is a sketch for illustration, not valuation.  
Produced by Open2view.com.

Approx. house area: 107 sqm  
Approx. outbuilding area: 11 sqm

