



kate

reality



16 Lily Street White Beach TAS

2 1 1

Prime location within a thriving hot spot for beach lovers. Great base for fishing or water activities with heaps of parking room for boats and caravans when friends join you for holidays. On the block there is a 90 m2 building constructed in 2005 with large 6 x 6m entertaining area with wood heater, kitchen, bathroom and two private rooms at the rear that can be used for sleeping.

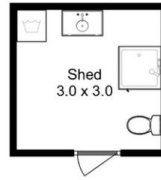
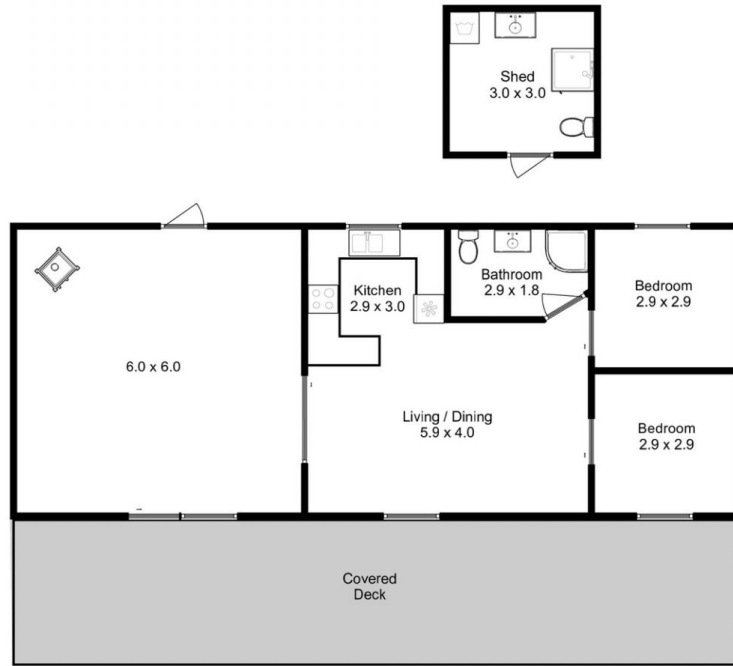
- Large front undercover deck perfect for barbeques
- Fenced yard to keep kids or pets in yard
- Low maintenance home with future potential for improvements (stca)
- Shed 3 x 3m for secure storage
- Outside laundry and extra toilet

A short drive to Nubeena where you will find an IGA supermarket, bank, medical centre, pharmacy, and much

Price : \$ 360,000
Building Size : 90 sqm
Land Size : 1172 sqm
View : <http://www.katestoreyrealty.com.au/sale/tas/hobart-southern/white-beach/residential/house/6521517>



Niahn Palmer
03 6253 6095



Total Approx. Floor Area : 90 sqm
 Total Approx. Outbuilding Area : 18 sqm

All measurements are internal and approximate.
 This plan is a sketch for illustration, not valuation.
 Produced by Open2view.com