



kate

reality



10 East Street Dodges Ferry TAS

3 2 4

Nestled into the landscape, this home takes absolute advantage of its location taking in sweeping views from Carlton River, down the beach, across Fredrick Henry Bay, & over to Mount Wellington in the west.

You will be drawn to the view from the moment you arrive here, with large, double-glazed floor to ceiling windows adorning the front of the house.

With peaked ceilings & the warmth of timber, natural light floods the main living space.

Entering through sliding glass doors, there is a very convenient atrium to your left, which offers a multitude of options for your use. A home gym, an art space, a sitting room, or additional storage if required.

To your right, however, you enter the home into the

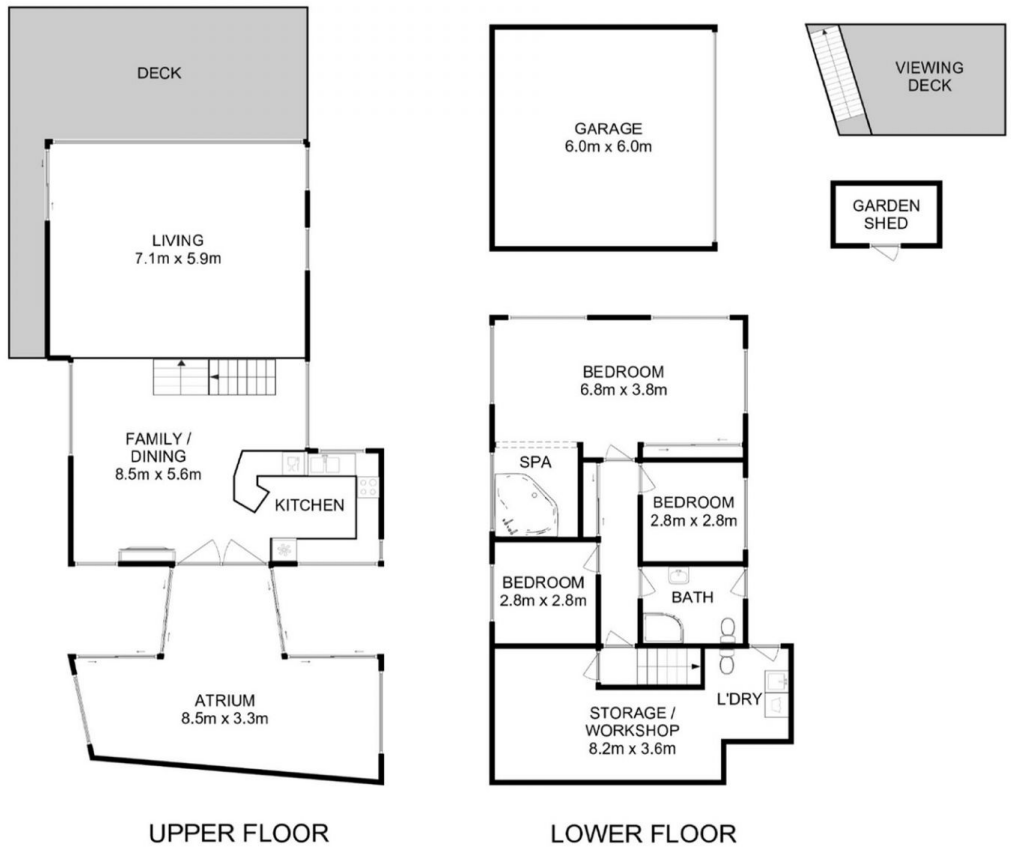
Price : \$ 700,500
Building Size : 226 sqm
Land Size : 822 sqm
View : <http://www.katestoreyrealty.com.au/sale/tas/hobart-southern/dodges-ferry/residential/house/6285709>



Donna Wooley
03 6265 3000



Emily Collins
03 6265 3000



UPPER FLOOR

LOWER FLOOR

All measurements are internal and approximate.
 This plan is a sketch for illustration, not valuation.
 Produced by Open2view.com.

Approx. house area: 226 sqm
 Approx. outbuilding area: 41 sqm

