



kate

reality



9 Delmore Road Forcett TAS

3 1 8

A haven from the frantic pace of city living, this home, just 6 minutes from Sorell offers an oasis of calm and tranquillity.

Enter through the electric gates into your retreat, with established and low maintenance gardens, towards this thoughtfully designed and equipped family home.

The family home, at the very rear of the 1,100m² block, has a large kitchen and open plan dining and lounge. The space feels light and bright thanks to overhead skylights and is extended by a covered read deck.

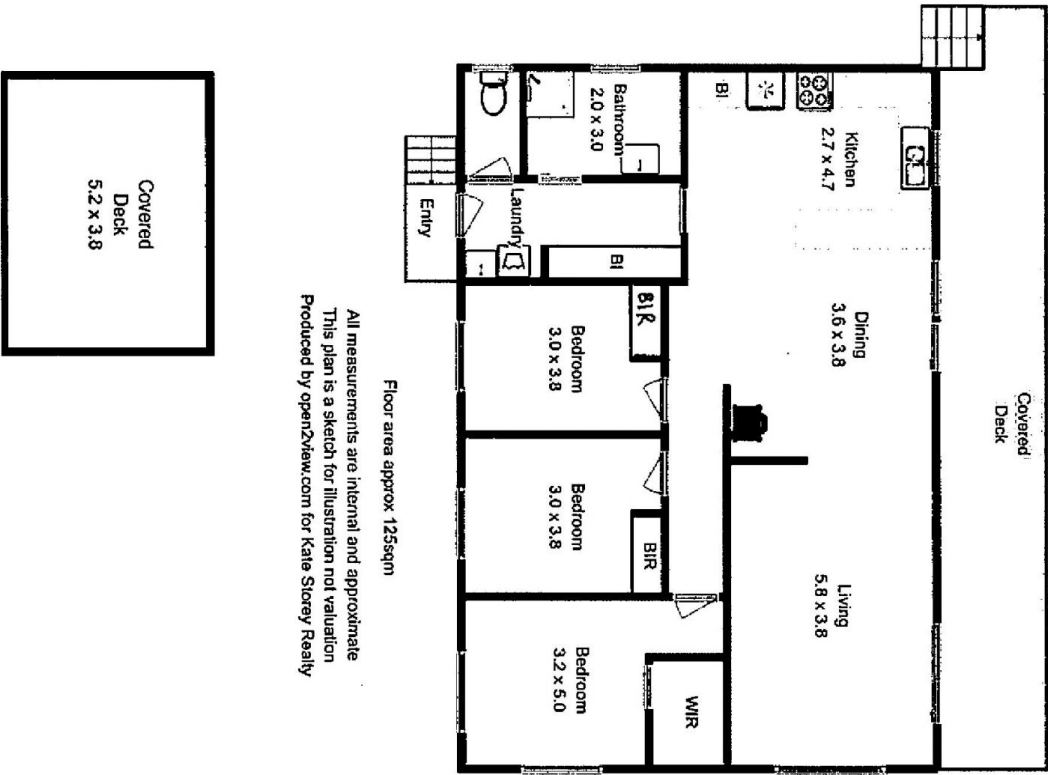
The kitchen has ample bench space, a large pantry, plenty of cupboards and a peaceful outlook through the large over-sink window.

The space is heated with a wood heater and has the

Price : \$ 490,000
Building Size : 125 sqm
Land Size : 1103 sqm
View : <http://www.katestoreyrealty.com.au/sale/tas/hobart-southern/forcett/residential/house/6012187>

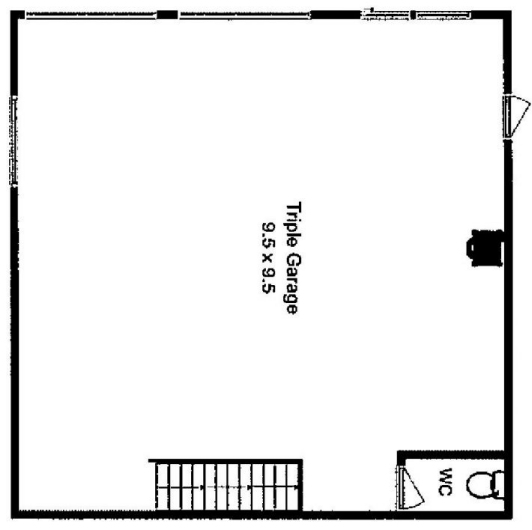


Donna Wooley
03 6265 3000



Floor area approx 125sqm

All measurements are internal and approximate
 This plan is a sketch for illustration not valuation
 Produced by open2view.com for Kate Storey Realty



(Outbuildings not shown in actual location)

