



7 Garvery Court Sorell TAS

3  2 

If you've been looking for a special place for your family to call home, this might very well be the one. A few steps inside and it's clear this house is all about family with a floor plan to impress savvy home buyers.

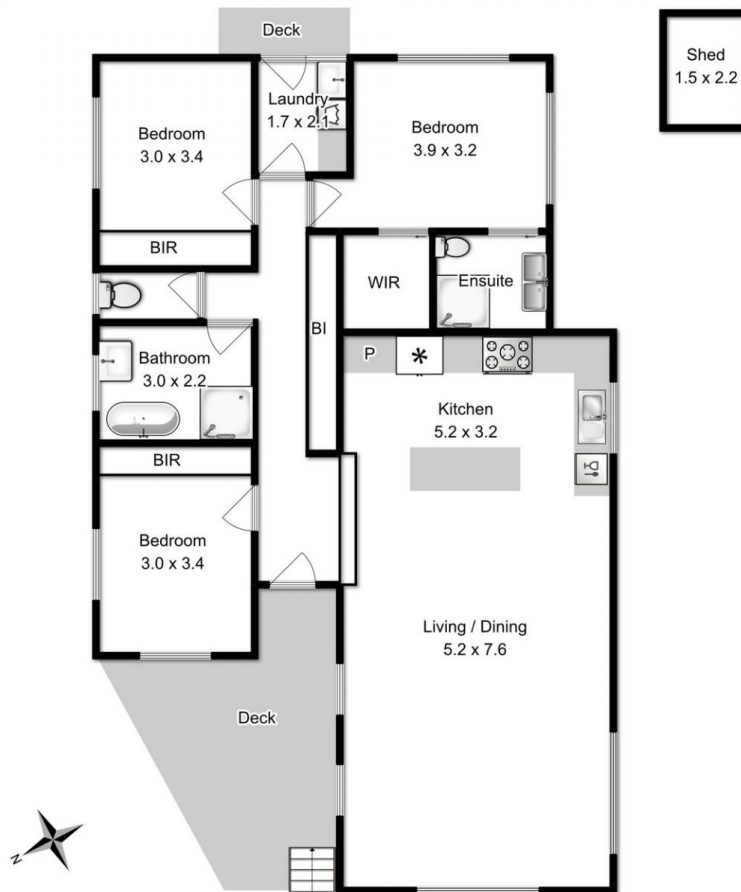
Exceptional design to meet your everyday requirements, the residence boasts a large open-plan living, dining area, natural light will fill the beautiful kitchen that features quality appliances, ample cabinetry and a generous sized pantry. Two spacious bedrooms feature built-in robes, with the master suite showcasing walk-in robes and en-suite. The family bathroom is luxury in design with a free-standing bath.

Outdoors offers low maintenance garden, space for your morning coffee and a grassed area for your furry companion. With an overall land size of approximately 573

Building Size : 143 sqm
View : <http://www.katestoreyrealty.com.au/sale/tas/hobart-southern/sorell/residential/homeuse/6012183>



Emily Collins
03 6265 3000



Floor area approx 135sqm

All measurements are internal and approximate
 This plan is a sketch for illustration not valuation
 Produced by open2view.com for Kate Storey Realty