



kate

reality



15 Edward Street Nubeena TAS

3 1 5

Looking over Parsons Bay and beyond located in the relaxed coastal village of Nubeena.

Low maintenance better block home on two levels. Ground level has two bedrooms, piano room, storage and the bathroom/laundry. On the 2nd level is a lovely open plan living/dining and kitchen area and another bedroom.

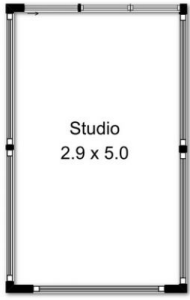
The main living area is heated and cooled with a reverse cycle heat pump. Outside there is a good-sized studio, garden shed and a lovely low maintenance garden. There is a lock up single garage and room for 3-4 cars to park of the street.

Located in a quiet no through street. Walking distance to the public jetty, boat ramp, school, medical centre, chemist and shops. Popular White Beach is only a short drive away.

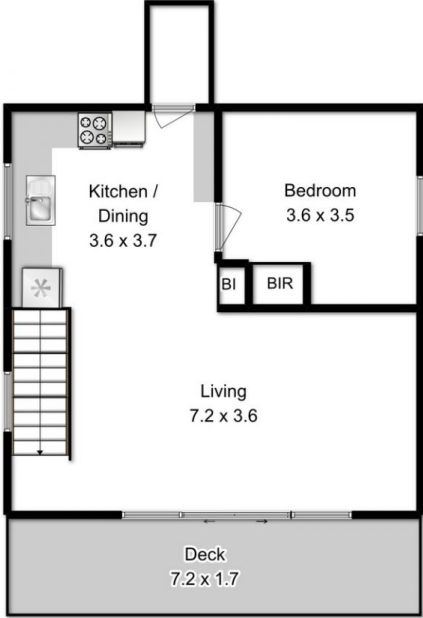
Building Size : 136 sqm
Land Size : 696 sqm
View : <http://www.katestoreyrealty.com.au/sale/tas/hobart-southern/nubeena/residential/house/5802405>



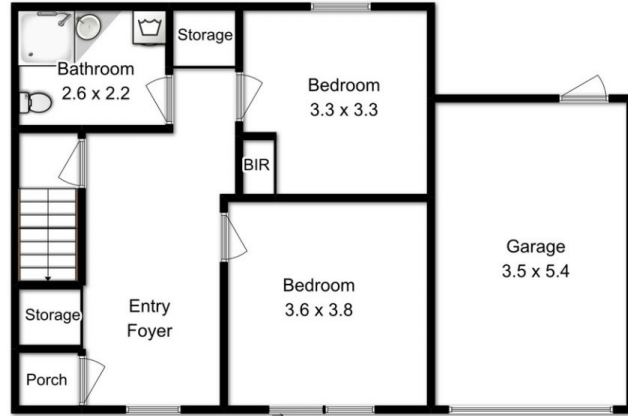
Kate Storey
03 6253 6095



All measurements are internal and approximate
This plan is a sketch for illustration not valuation
Produced by open2view.com for Kate Storey Realty



Upper Level



Entry Level

House floor area approx 112sqm
(excluding garage)