



kate

reality



21/6955 Arthur Highway Port Arthur TAS

2 2 2

A rare opening exists to secure this stunning 2 bedroom luxury cabin within Stewarts Bay Lodge in beautiful Port Arthur. Escape to the idyllic surrounds of native bush and afternoon sea breezes in Cabin 21, conveniently located effortlessly from the cafe/restaurant.

Occupying prime position, you cant go past watching the sunset from the comfort of the deck while wildlife play and evening beach walks are at your doorstep. Cabin 21, with its tasteful and neutral decor, offers 2 bedrooms and 2 bathrooms. The master en-suite occupying a coveted corner location comes complete with your very own spa with a view that allows you to soak away the days troubles.

An excellent investment, Cabin 21 can be used by the owners for up to 30 days* per year and is the perfect base for you to explore the stunning Tasman Peninsula,

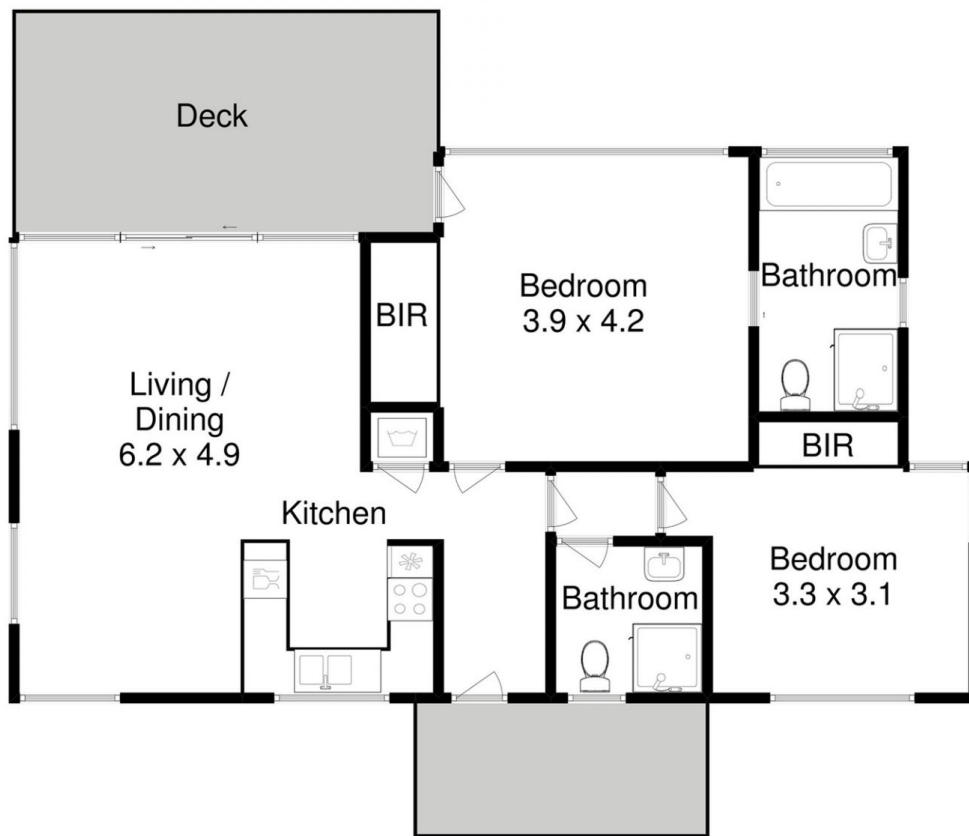
Price : \$ 385,000
Building Size : 92 sqm
Land Size : 127 sqm
View : <http://www.katestoreyrealty.com.au/sale/tas/hobart-southern/port-arthur/residential/unit/5749334>



Emily Collins
03 6265 3000



Donna Wooley
03 6265 3000



All measurements are internal and approximate.
This plan is a sketch for illustration, not valuation.
Produced by Open2view.com.

Approx. house area: 92 sqm

