



kate

reality



229 Bream Creek Road Bream Creek TAS

3 1 2

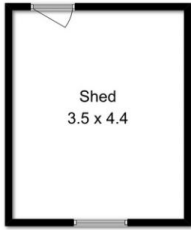
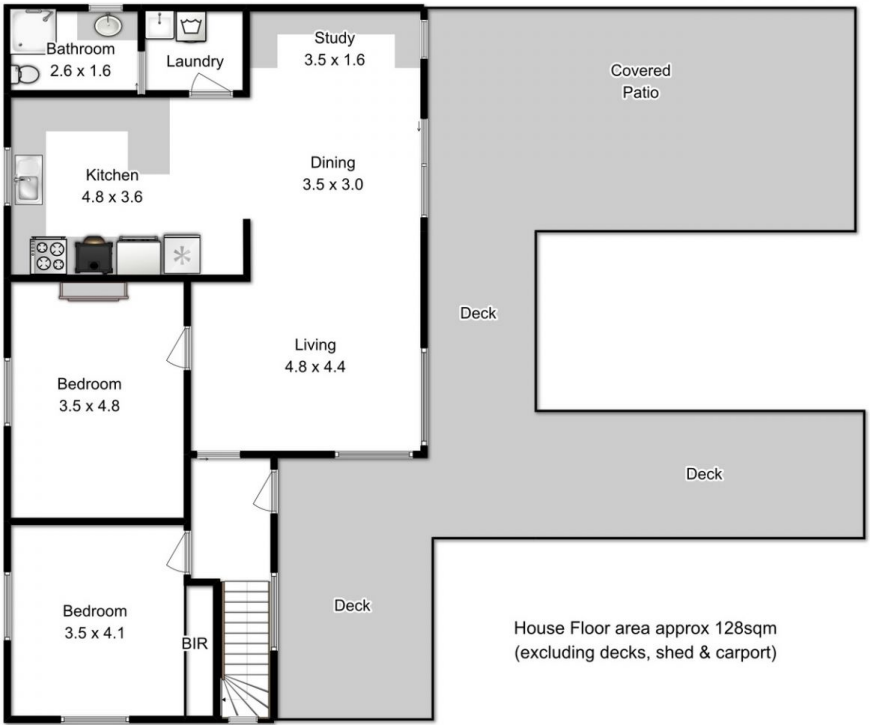
Watch the rays of first light come over the bay from your bedroom and admire the ever-changing scenery from the open plan living area and deck. The small community of Bream Creek has the luxury of extraordinary views and lifestyle choices with homes tightly held by families through many decades.

Nestled on a hillside with sensational water views of Marion Bay, this is the place that you will want to call home. Bright and airy open plan living, kitchen and dining area, which extends out into the undercover patio, and sun deck. The kitchen is well positioned and offers plenty of bench space. The three bedrooms are a generous size with two having built in robes. One bedroom is downstairs giving additional privacy. The bathroom is neat and tidy with a walk-in shower and separate laundry for added convenience.

Building Size : 134 sqm
Land Size : 1012 sqm
View : <http://www.katestoreyrealty.com.au/sale/tas/hobart-southern/bream-creek/residential/house/5744685>



Emily Collins
03 6265 3000



All measurements are internal and approximate
 This plan is a sketch for illustration not valuation
 Produced by open2view.com for Kate Storey Realty

House Floor area approx 128sqm
 (excluding decks, shed & carport)



Lower Level

