



16/6955 Arthur Highway Port Arthur TAS

1  1  1 

Cabin 16 at Stewarts Bay Lodge combines a great investment opportunity with a wonderful holiday retreat. Located approximately 90 minutes' drive from Hobart, this impeccably presented 1-bedroom log cabin has stunning views of the pristine and sheltered Stewarts Bay Beach which is just a stroll away.

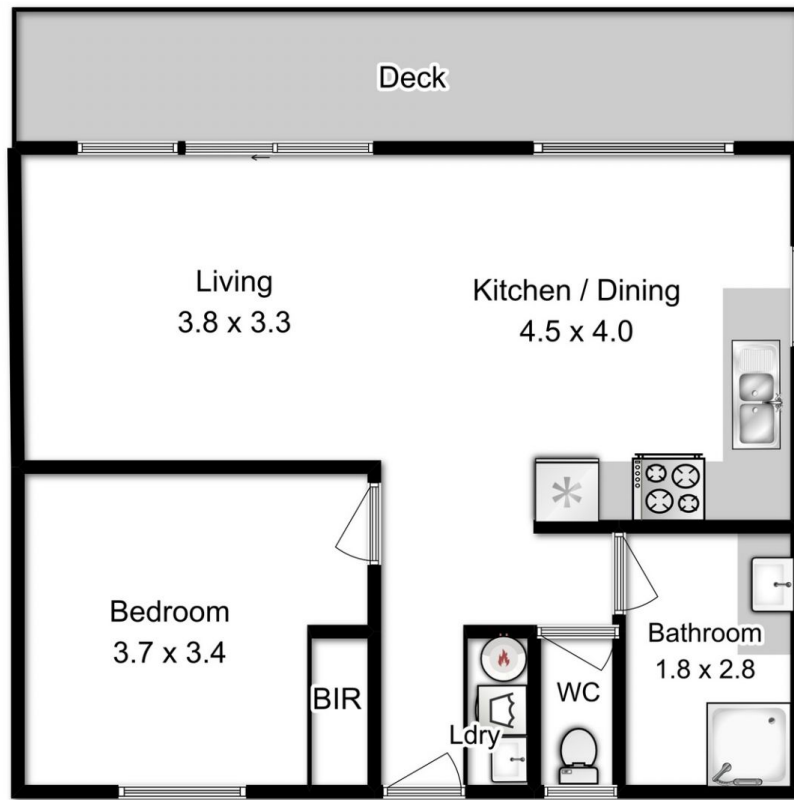
Situated on the spectacular Tasman Peninsula, the cabin is within a short walking distance of Port Arthur Historic site and Pennicott boat tours. If you're into water sports there is fishing, diving, swimming, and surfing on your doorstep.

As an investment opportunity, Cabin 16 has shown great returns with high occupancy rates for many years. As an owner, you can stay at your managed cabin for 30 days per year and make the most of all the amenities on offer. These include public BBQ's, tennis court, restaurant, play

Price : \$ 262,000
Building Size : 82 sqm
Land Size : 82 sqm
View : <http://www.katestoreyrealty.com.au/sale/tas/hobart-southern/port-arthur/residential/villa/5744423>



Niahn Palmer
03 6253 6095



Floor area approx 61sqm

All measurements are internal and approximate
This plan is a sketch for illustration not valuation
Produced by open2view.com for Kate Storey Realty